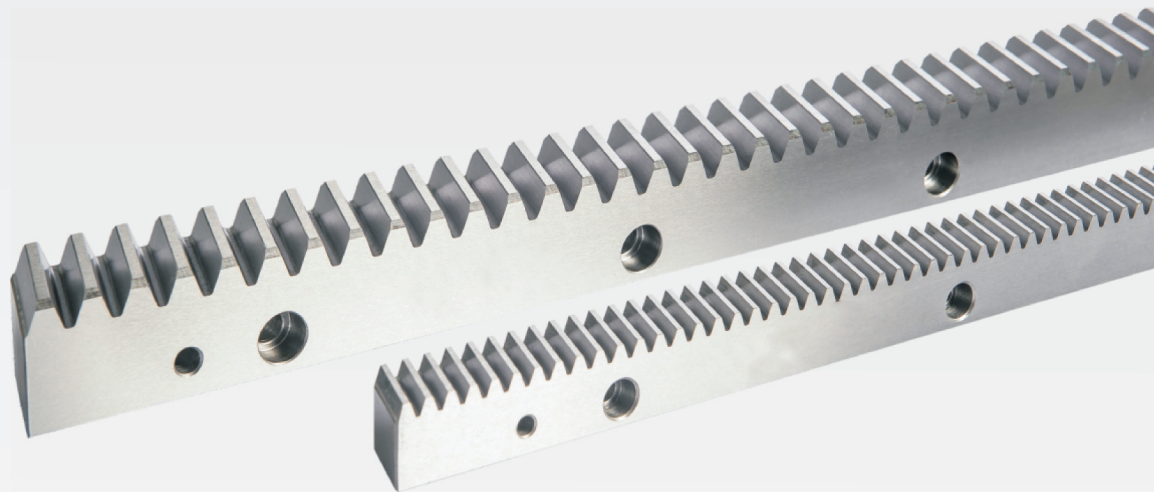
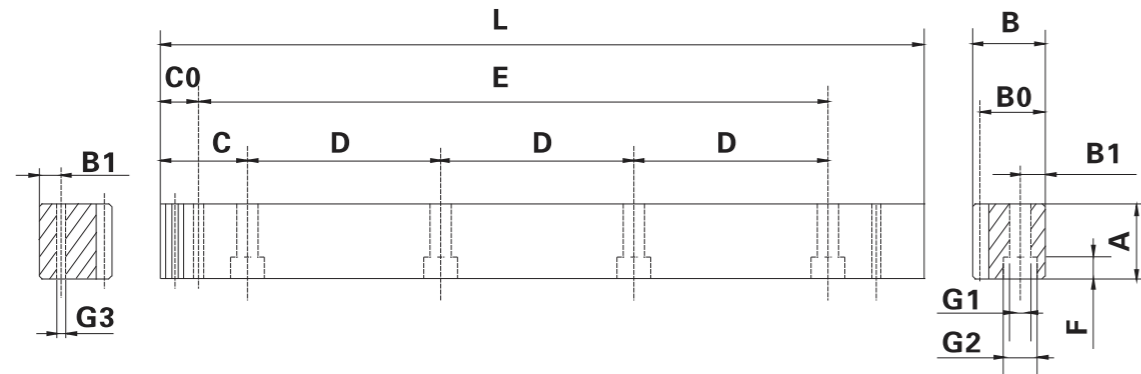


# CUSTOMIZED RACK / GRINDING RACK



# Precision Rack

## SSGH-DIN5



單位/Dimension : mm

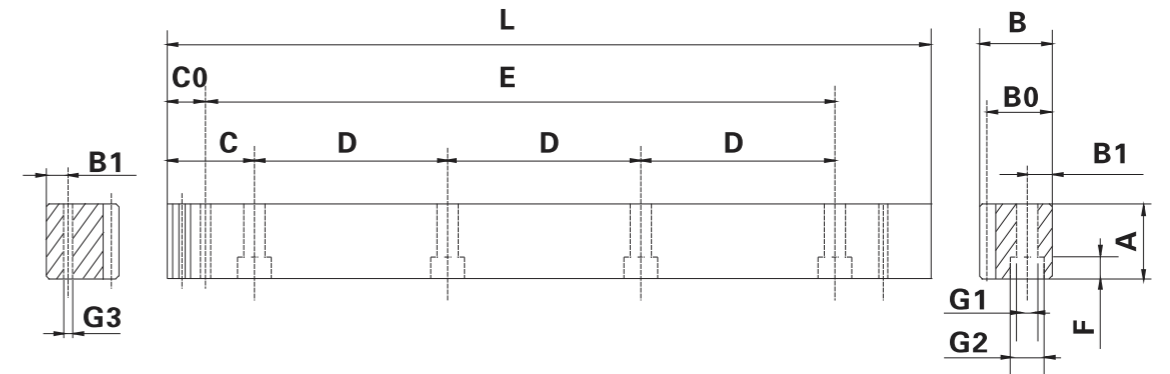
產品型號 Catalog No.	L	齒數 Tooth No.	A	B	B0	C	D	孔數 Hole No.	B1	G1	G2	F	C0	E	G3
SSGH1.50505	499.51	106	17	17	15.5	62.44	124.88	4	8	6	9.5	7	29.0	441.5	5.7
SSGH1.51005	999.03	212	17	17	15.5	62.44	124.88	8	8	6	9.5	7	29.0	941.0	5.7
SSGH020505	502.64	80	24	24	22	62.83	125.66	4	8	7	11	7	31.3	440.1	5.7
SSGH021005	1005.28	160	24	24	22	62.83	125.66	8	8	7	11	7	31.3	942.7	5.7
SSGH030505	508.95	54	29	29	26	63.62	127.23	4	9	10	15	9	34.4	440.1	7.7
SSGH031005	1017.9	108	29	29	26	63.62	127.23	8	9	10	15	9	34.4	949.1	7.7
SSGH040505	502.64	40	39	39	35	62.83	125.66	4	12	10	15	9	37.5	427.7	7.7
SSGH041005	1005.28	80	39	39	35	62.83	125.66	8	12	10	15	9	37.5	930.3	7.7
SSGH050505	502.65	32	49	39	34	62.83	125.66	4	12	14	20	13	30.1	442.4	11.7
SSGH051005	1005.31	64	49	39	34	62.83	125.66	8	12	14	20	13	30.1	945	11.7
SSGH060505	508.95	27	59	49	43	63.62	127.23	4	16	18	26	17	31.4	446.1	15.7
SSGH061005	1017.9	54	59	49	43	63.62	127.23	8	16	18	26	17	31.4	955.0	15.7
SSGH080505	502.64	20	79	79	71	62.83	125.66	4	25	22	33	21	26.6	449.5	19.7
SSGH081005	1005.28	40	79	79	71	62.83	125.66	8	25	22	33	21	26.6	952	19.7

### 規格 Specifications

精度等級 Precision grade	DIN5h22	齒面硬度 Tooth hardness	50 ~ 55HRC
齒型 Gear teeth	直齒 Straight	表面處理 Surface treatment	研磨 Grinding
壓力角 Pressure angle	20°	齒面處理 Treatment of Tooth	研磨 Grinding
材質 Material	S45C	熱處理 Heat treatment	齒面高周波熱處理 Tooth surface induction hardened

# Precision Rack

## SSGH-DIN5



單位/Dimension : mm

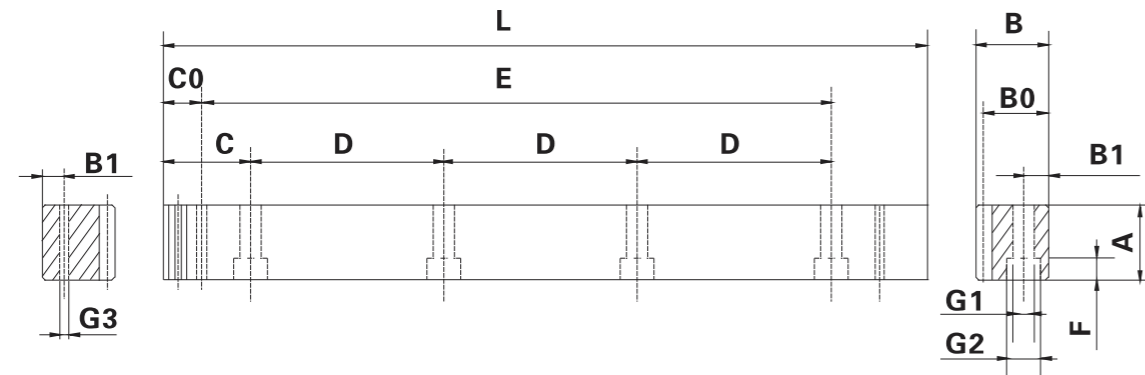
產品型號 Catalog No.	L	齒數 Tooth No.	A	B	B0	C	D	孔數 Hole No.	B1	G1	G2	F	C0	E	G3
SSGH021505	1507.97	240	24	24	22	62.83	125.66	12	8	7	11	7	31.3	942.7	5.7
SSGH022005	2010.62	320	24	24	22	62.83	125.66	16	8	7	11	7	31.3	1948.00	5.7
SSGH031505	1526.82	162	29	29	26	63.62	127.23	12	9	10	15	9	34.4	949.10	7.7
SSGH032005	2035.75	216	29	29	26	63.62	127.23	16	9	10	15	9	34.4	1967.00	7.7
SSGH041505	1507.90	120	39	39	35	62.83	125.66	12	12	10	15	9	37.5	1432.9	7.7
SSGH042005	2010.62	160	39	39	35	62.83	125.66	16	12	10	15	9	37.5	1935.60	7.7

### 規格 Specifications

精度等級 Precision grade	DIN5h22	齒面硬度 Tooth hardness	50 ~ 55HRC
齒型 Gear teeth	直齒 Straight	表面處理 Surface treatment	研磨 Grinding
壓力角 Pressure angle	20°	齒面處理 Treatment of Tooth	研磨 Grinding
材質 Material	S45C	熱處理 Heat treatment	齒面高周波熱處理 Tooth surface induction hardened

# Precision Rack

## SSGH-DIN6



單位/Dimension : mm

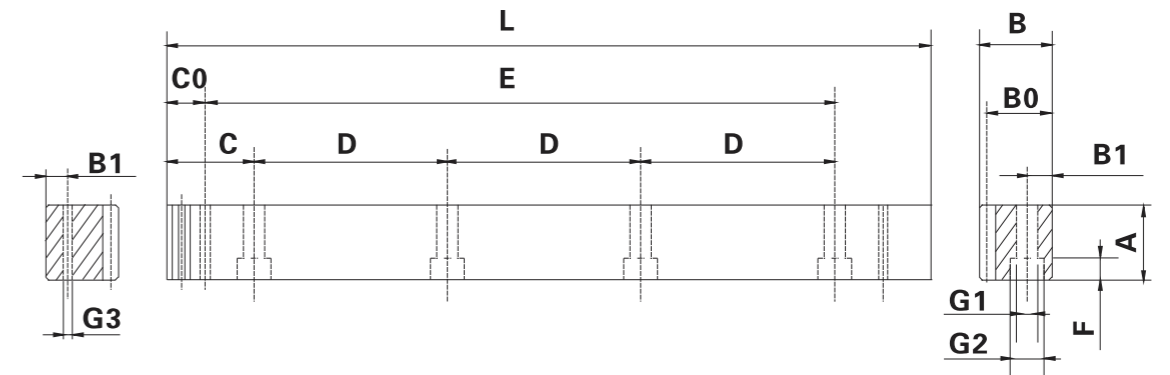
產品型號 Catalog No.	L	齒數 Tooth No.	A	B	B0	C	D	孔數 Hole No.	B1	G1	G2	F	C0	E	G3
SSGH1.50506	499.51	106	17	17	15.5	62.44	124.88	4	8	6	9.5	7	29.0	441.5	5.7
SSGH1.51006	999.03	212	17	17	15.5	62.44	124.88	8	8	6	9.5	7	29.0	941.0	5.7
SSGH020506	502.64	80	24	24	22	62.83	125.66	4	8	7	11	7	31.3	440.1	5.7
SSGH021006	1005.28	160	24	24	22	62.83	125.66	8	8	7	11	7	31.3	942.7	5.7
SSGH030506	508.95	54	29	29	26	63.62	127.23	4	9	10	15	9	34.4	440.1	7.7
SSGH031006	1017.9	108	29	29	26	63.62	127.23	8	9	10	15	9	34.4	949.1	7.7
SSGH040506	502.64	40	39	39	35	62.83	125.66	4	12	10	15	9	37.5	427.7	7.7
SSGH041006	1005.28	80	39	39	35	62.83	125.66	8	12	10	15	9	37.5	930.3	7.7
SSGH050506	502.65	32	49	49	34	62.83	125.66	4	12	14	20	13	30.1	442.4	11.7
SSGH051006	1005.31	64	49	49	34	62.83	125.66	8	12	14	20	13	30.1	945	11.7
SSGH060506	508.95	27	59	59	43	63.62	127.23	4	16	18	26	17	31.4	446.1	15.7
SSGH061006	1017.9	54	59	59	43	63.62	127.23	8	16	18	26	17	31.4	955.0	15.7
SSGH080506	502.64	20	79	79	71	62.83	125.66	4	25	22	33	21	26.6	449.5	19.7
SSGH081006	1005.28	40	79	79	71	62.83	125.66	8	25	22	33	21	26.6	952	19.7

### 規格 Specifications

精度等級 Precision grade	DIN6h25	齒面硬度 Tooth hardness	50 ~ 55HRC
齒型 Gear teeth	直齒 Straight	表面處理 Surface treatment	研磨 Grinding
壓力角 Pressure angle	20°	齒面處理 Treatment of Tooth	研磨 Grinding
材質 Material	S45C	熱處理 Heat treatment	齒面高周波熱處理 Tooth surface induction hardened

# Precision Rack

## SSGH-DIN6



單位/Dimension : mm

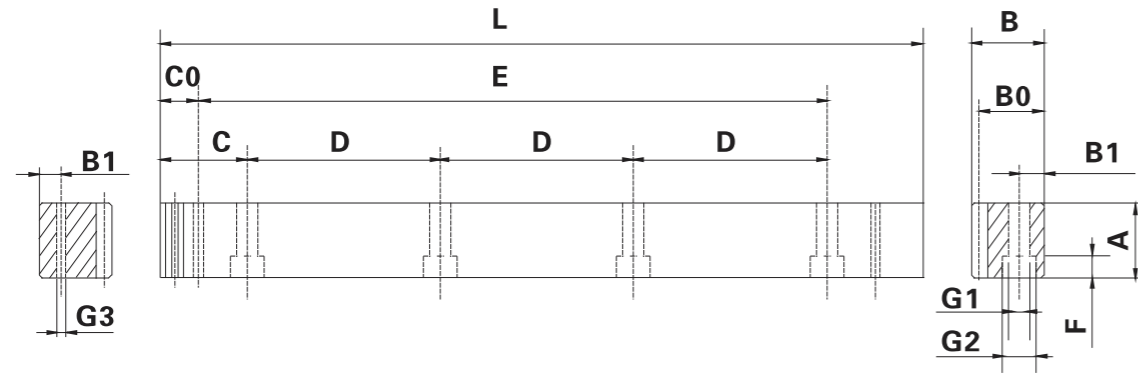
產品型號 Catalog No.	L	齒數 Tooth No.	A	B	B0	C	D	孔數 Hole No.	B1	G1	G2	F	C0	E	G3
SSGH021506	1507.97	240	24	24	22	62.83	125.66	12	8	7	11	7	31.3	942.7	5.7
SSGH022006	2010.62	320	24	24	22	62.83	125.66	16	8	7	11	7	31.3	1948.00	5.7
SSGH031506	1526.82	162	29	29	26	63.62	127.23	12	9	10	15	9	34.4	949.10	7.7
SSGH032006	2035.75	216	29	29	26	63.62	127.23	16	9	10	15	9	34.4	1967.00	7.7
SSGH041506	1507.90	120	39	39	35	62.83	125.66	12	12	10	15	9	37.5	1432.9	7.7
SSGH042006	2010.62	160	39	39	35	62.83	125.66	16	12	10	15	9	37.5	1935.60	7.7
SSGH051506	1507.96	96	49	49	34	62.83	125.66	12	12	14	20	13	30.1	1447.70	11.7
SSGH052006	2010.62	128	49	49	34	62.83	125.66	16	12	14	20	13	30.1	1950.40	11.7
SSGH061506	1526.81	81	59	59	43	63.62	127.23	12	16	18	26	17	31.4	1464.00	15.7
SSGH062006	2035.75	108	59	59	43	63.62	127.23	16	16	18	26	17	31.4	1973.00	15.7
SSGH082006	2010.61	80	79	79	71	62.83	125.66	16	25	22	33	21	26.6	1957.30	19.7

### 規格 Specifications

精度等級 Precision grade	DIN6h25	齒面硬度 Tooth hardness	50 ~ 55HRC
齒型 Gear teeth	直齒 Straight	表面處理 Surface treatment	研磨 Grinding
壓力角 Pressure angle	20°	齒面處理 Treatment of Tooth	研磨 Grinding
材質 Material	S45C	熱處理 Heat treatment	齒面高周波熱處理 Tooth surface induction hardened

# Precision Rack

SSGH-DIN6M



單位/Dimension : mm

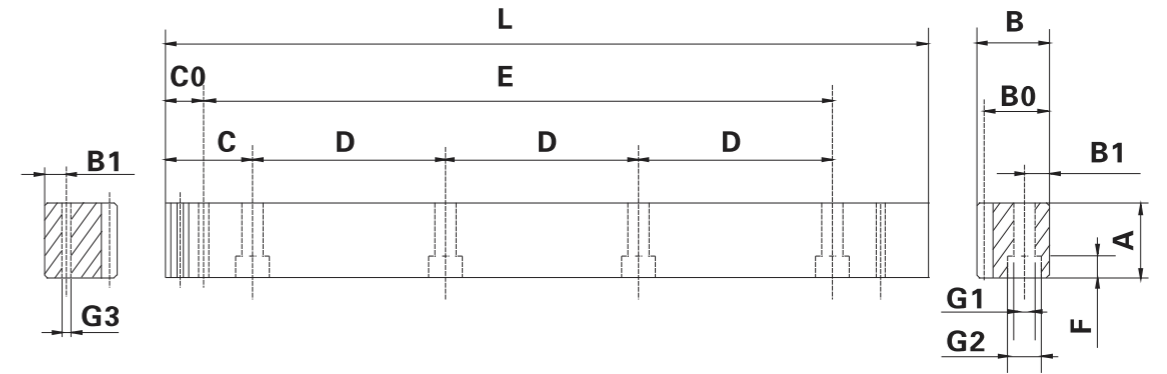
產品型號 Catalog No.	L	齒數 Tooth No.	A	B	B0	C	D	孔數 Hole No.	B1	G1	G2	F	C0	E	G3
SSGH1.50506M	499.51	106	17	17	15.5	62.44	124.88	4	8	6	9.5	7	29.0	441.5	5.7
SSGH1.51006M	999.03	212	17	17	15.5	62.44	124.88	8	8	6	9.5	7	29.0	941.0	5.7
SSGH020506M	502.64	80	24	24	22	62.83	125.66	4	8	7	11	7	31.3	440.1	5.7
SSGH021006M	1005.28	160	24	24	22	62.83	125.66	8	8	7	11	7	31.3	942.7	5.7
SSGH030506M	508.95	54	29	29	26	63.62	127.23	4	9	10	15	9	34.4	440.1	7.7
SSGH031006M	1017.9	108	29	29	26	63.62	127.23	8	9	10	15	9	34.4	949.1	7.7
SSGH040506M	502.64	40	39	39	35	62.83	125.66	4	12	10	15	9	37.5	427.7	7.7
SSGH041006M	1005.28	80	39	39	35	62.83	125.66	8	12	10	15	9	37.5	930.3	7.7
SSGH050506M	502.65	32	49	39	34	62.83	125.66	4	12	14	20	13	30.1	442.4	11.7
SSGH051006M	1005.31	64	49	39	34	62.83	125.66	8	12	14	20	13	30.1	945	11.7
SSGH060506M	508.95	27	59	49	43	63.62	127.23	4	16	18	26	17	31.4	446.1	15.7
SSGH061006M	1017.9	54	59	49	43	63.62	127.23	8	16	18	26	17	31.4	955.0	15.7
SSGH080506M	502.64	20	79	79	71	62.83	125.66	4	25	22	33	21	26.6	449.5	19.7
SSGH081006M	1005.28	40	79	79	71	62.83	125.66	8	25	22	33	21	26.6	952	19.7

## 規格 Specifications

精度等級 Precision grade	DIN6Mh25	齒面硬度 Tooth hardness	50 ~ 55HRC
齒型 Gear teeth	直齒 Straight	表面處理 Surface treatment	研磨 Grinding
壓力角 Pressure angle	20°	齒面處理 Treatment of Tooth	研磨 Grinding
材質 Material	S45C	熱處理 Heat treatment	齒面高周波熱處理 Tooth surface induction hardened

# Precision Rack

SSFQ-DIN7



單位/Dimension : mm

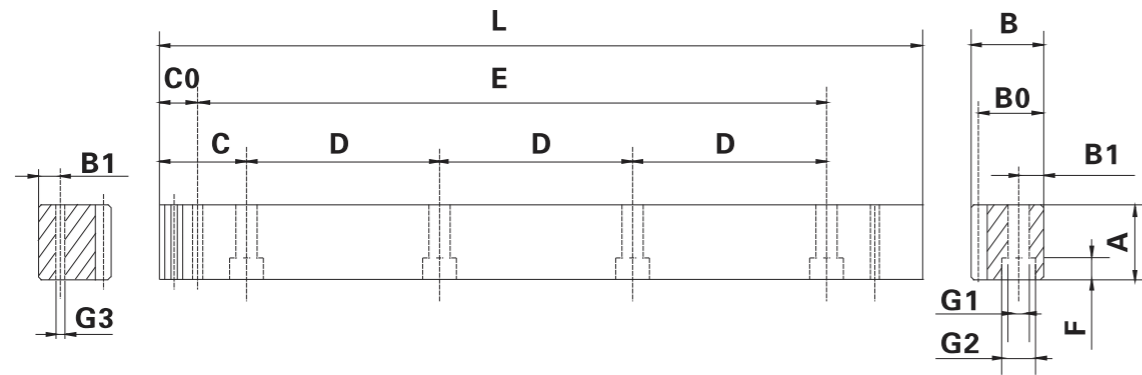
產品型號 Catalog No.	L	齒數 Tooth No.	A	B	B0	C	D	孔數 Hole No.	B1	G1	G2	F	C0	E	G3
SSFQ1.50507G	499.51	106	17	17	15.5	62.44	124.88	4	8	6	9.5	7	29.0	441.5	5.7
SSFQ1.51007G	999.03	212	17	17	15.5	62.44	124.88	8	8	6	9.5	7	29.0	941.0	5.7
SSFQ020507G	502.64	80	25	24	22	62.83	125.66	4	8	7	11	7	31.3	440.1	5.7
SSFQ021007G	1005.28	160	25	24	22	62.83	125.66	8	8	7	11	7	31.3	942.7	5.7
SSFQ030507G	508.95	54	30	29	26	63.62	127.23	4	9	10	15	9	34.4	440.1	7.7
SSFQ031007G	1017.9	108	30	29	26	63.62	127.23	8	9	10	15	9	34.4	949.1	7.7
SSFQ040507G	502.64	40	40	39	35	62.83	125.66	4	12	10	15	9	37.5	427.7	7.7
SSFQ041007G	1005.28	80	40	39	35	62.83	125.66	8	12	10	15	9	37.5	930.3	7.7
SSFQ050507G	502.65	32	50	39	34	62.83	125.66	4	12	14	20	13	30.1	442.4	11.7
SSFQ051007G	1005.31	64	50	39	34	62.83	125.66	8	12	14	20	13	30.1	945	11.7
SSFQ060507G	508.95	27	59	49	43	63.62	127.23	4	16	18	26	17	31.4	446.1	15.7
SSFQ061007G	1017.9	54	59	49	43	63.62	127.23	8	16	18	26	17	31.4	955.0	15.7
SSFQ080507G	502.64	20	79	79	71	62.83	125.66	4	25	22	33	21	26.6	449.5	19.7
SSFQ081007G	1005.28	40	79	79	71	62.83	125.66	8	25	22	33	21	26.6	952	19.7

## 規格 Specifications

精度等級 Precision grade	DIN7e25	齒面硬度 Tooth hardness	15 ~ 20HRC
齒型 Gear teeth	直齒 Straight	表面處理 Surface treatment	研磨 Grinding
壓力角 Pressure angle	20°	齒面處理 Treatment of Tooth	精切削 Finish cutting
材質 Material	S45C	熱處理 Heat treatment	調質熱處理 Quenched

# Precision Rack

## SSFQ-DIN8



單位/Dimension : mm

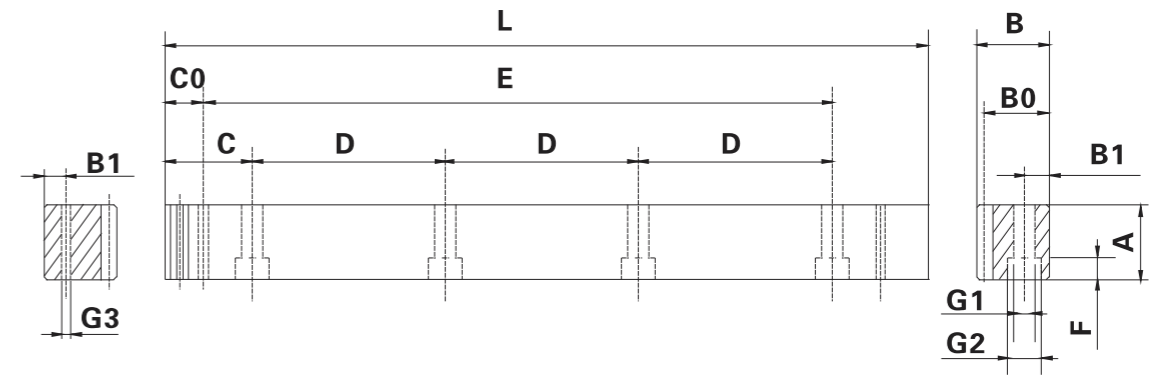
產品型號 Catalog No.	L	齒數 Tooth No.	A	B	B0	C	D	孔數 Hole No.	B1	G1	G2	F	C0	E	G3
SSFQ1.50508	499.51	106	17	17	15.5	62.44	124.88	4	8	6	9.5	7	29.0	441.5	5.7
SSFQ1.51008	999.03	212	17	17	15.5	62.44	124.88	8	8	6	9.5	7	29.0	941.0	5.7
SSFQ020508	502.64	80	25	24	22	62.83	125.66	4	8	7	11	7	31.3	440.1	5.7
SSFQ021008	1005.28	160	25	24	22	62.83	125.66	8	8	7	11	7	31.3	942.7	5.7
SSFQ030508	508.95	54	30	29	26	63.62	127.23	4	9	10	15	9	34.4	440.1	7.7
SSFQ031008	1017.9	108	30	29	26	63.62	127.23	8	9	10	15	9	34.4	949.1	7.7
SSFQ040508	502.64	40	40	39	35	62.83	125.66	4	12	10	15	9	37.5	427.7	7.7
SSFQ041008	1005.28	80	40	39	35	62.83	125.66	8	12	10	15	9	37.5	930.3	7.7
SSFQ050508	502.65	32	50	39	34	62.83	125.66	4	12	14	20	13	30.1	442.4	11.7
SSFQ051008	1005.31	64	50	39	34	62.83	125.66	8	12	14	20	13	30.1	945	11.7
SSFQ060508	508.95	27	59	49	43	63.62	127.23	4	16	18	26	17	31.4	446.1	15.7
SSFQ061008	1017.9	54	59	49	43	63.62	127.23	8	16	18	26	17	31.4	955.0	15.7
SSFQ080508	502.64	20	79	79	71	62.83	125.66	4	25	22	33	21	26.6	449.5	19.7
SSFQ081008	1005.28	40	79	79	71	62.83	125.66	8	25	22	33	21	26.6	952	19.7

### 規格 Specifications

精度等級 Precision grade	DIN8e27	齒面硬度 Tooth hardness	15 ~ 20HRC
齒型 Gear teeth	直齒 Straight	表面處理 Surface treatment	精切削 Finish cutting
壓力角 Pressure angle	20°	齒面處理 Treatment of Tooth	精切削 Finish cutting
材質 Material	S45C	熱處理 Heat treatment	調質熱處理 Quenched

# Precision Rack

## SSFH-DIN9



單位/Dimension : mm

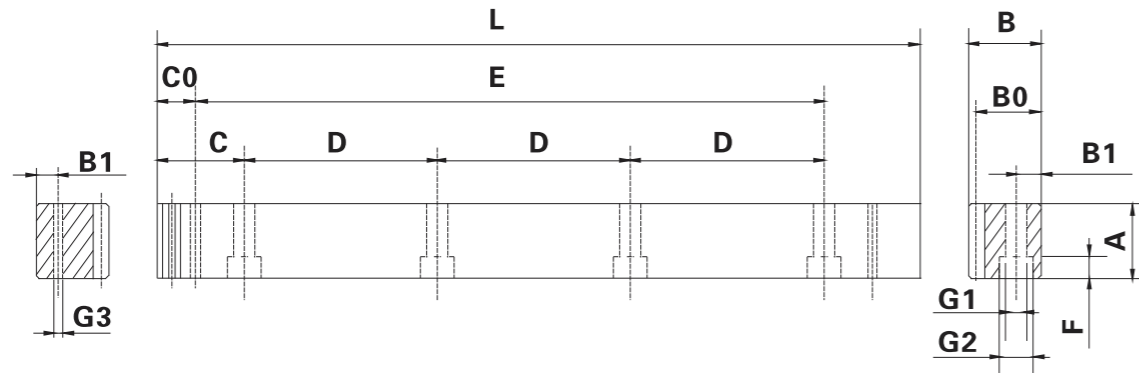
產品型號 Catalog No.	L	齒數 Tooth No.	A	B	B0	C	D	孔數 Hole No.	B1	G1	G2	F	C0	E	G3
SSFH1.50509G	499.51	106	17	17	15.5	62.44	124.88	4	8	6	9.5	7	29.0	441.5	5.7
SSFH1.51009G	999.03	212	17	17	15.5	62.44	124.88	8	8	6	9.5	7	29.0	941.0	5.7
SSFH020509G	502.64	80	24	24	22	62.83	125.66	4	8	7	11	7	31.3	440.1	5.7
SSFH021009G	1005.28	160	24	24	22	62.83	125.66	8	8	7	11	7	31.3	942.7	5.7
SSFH030509G	508.95	54	29	29	26	63.62	127.23	4	9	10	15	9	34.4	440.1	7.7
SSFH031009G	1017.9	108	29	29	26	63.62	127.23	8	9	10	15	9	34.4	949.1	7.7
SSFH040509G	502.64	40	39	39	35	62.83	125.66	4	12	10	15	9	37.5	427.7	7.7
SSFH041009G	1005.28	80	39	39	35	62.83	125.66	8	12	10	15	9	37.5	930.3	7.7
SSFH050509G	502.65	32	49	39	34	62.83	125.66	4	12	14	20	13	30.1	442.4	11.7
SSFH051009G	1005.31	64	49	39	34	62.83	125.66	8	12	14	20	13	30.1	945	11.7
SSFH060509G	508.95	27	59	49	43	63.62	127.23	4	16	18	26	17	31.4	446.1	15.7
SSFH061009G	1017.9	54	59	49	43	63.62	127.23	8	16	18	26	17	31.4	955.0	15.7
SSFH080509G	502.64	20	79	79	71	62.83	125.66	4	25	22	33	21	26.6	449.5	19.7
SSFH081009G	1005.28	40	79	79	71	62.83	125.66	8	25	22	33	21	26.6	952	19.7

### 規格 Specifications

精度等級 Precision grade	DIN9e27	齒面硬度 Tooth hardness	50 ~ 55HRC
齒型 Gear teeth	直齒 Straight	表面處理 Surface treatment	研磨 Grinding
壓力角 Pressure angle	20°	齒面處理 Treatment of Tooth	精切削 Finish cutting
材質 Material	S45C	熱處理 Heat treatment	齒面高周波熱處理 Tooth surface induction hardened

# Precision Rack

SSF-DIN9



單位/Dimension : mm

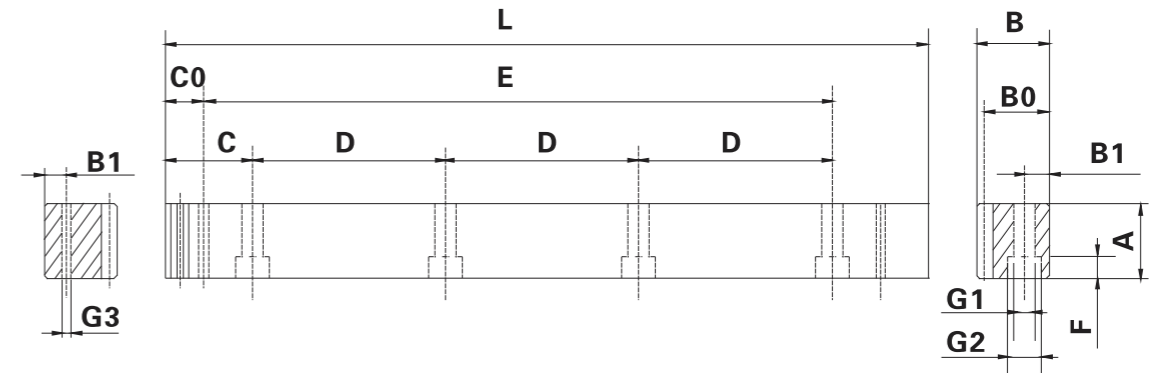
產品型號 Catalog No.	L	齒數 Tooth No.	A	B	B0	C	D	孔數 Hole No.	B1	G1	G2	F	C0	E	G3
SSF1.50509	499.51	106	17	17	15.5	62.44	124.88	4	8	6	9.5	7	29.0	441.5	5.7
SSF1.51009	999.03	212	17	17	15.5	62.44	124.88	8	8	6	9.5	7	29.0	941.0	5.7
SSF020509	502.64	80	24	24	22	62.83	125.66	4	8	7	11	7	31.3	440.1	5.7
SSF021009	1005.28	160	24	24	22	62.83	125.66	8	8	7	11	7	31.3	942.7	5.7
SSF030509	508.95	54	29	29	26	63.62	127.23	4	9	10	15	9	34.4	440.1	7.7
SSF031009	1017.9	108	29	29	26	63.62	127.23	8	9	10	15	9	34.4	949.1	7.7
SSF040509	502.64	40	39	39	35	62.83	125.66	4	12	10	15	9	37.5	427.7	7.7
SSF041009	1005.28	80	39	39	35	62.83	125.66	8	12	10	15	9	37.5	930.3	7.7
SSF050509	502.65	32	49	39	34	62.83	125.66	4	12	14	20	13	30.1	442.4	11.7
SSF051009	1005.31	64	49	39	34	62.83	125.66	8	12	14	20	13	30.1	945	11.7
SSF060509	508.95	27	59	49	43	63.62	127.23	4	16	18	26	17	31.4	446.1	15.7
SSF061009	1017.9	54	59	49	43	63.62	127.23	8	16	18	26	17	31.4	955.0	15.7
SSF080509	502.64	20	79	79	71	62.83	125.66	4	25	22	33	21	26.6	449.5	19.7
SSF081009	1005.28	40	79	79	71	62.83	125.66	8	25	22	33	21	26.6	952	19.7

## 規格 Specifications

精度等級 Precision grade	DIN9e27	齒面硬度 Tooth hardness	15HRC以下 Less than 15HRC
齒型 Gear teeth	直齒 Straight	表面處理 Surface treatment	精切削 Finish cutting
壓力角 Pressure angle	20°	齒面處理 Treatment of Tooth	精切削 Finish cutting
材質 Material	S45C	熱處理 Heat treatment	——

# Precision Rack

SSFH-DIN10



單位/Dimension : mm

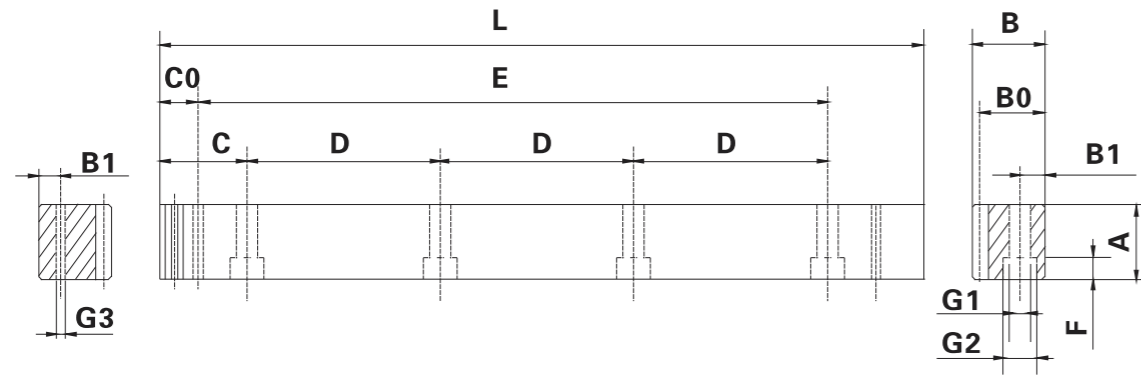
產品型號 Catalog No.	L	齒數 Tooth No.	A	B	B0	C	D	孔數 Hole No.	B1	G1	G2	F	C0	E	G3
SSFH1.50510	499.51	106	17	17	15.5	62.44	124.88	4	8	6	9.5	7	29.0	441.5	5.7
SSFH1.51010	999.03	212	17	17	15.5	62.44	124.88	8	8	6	9.5	7	29.0	941.0	5.7
SSFH020510	502.64	80	24	24	22	62.83	125.66	4	8	7	11	7	31.3	440.1	5.7
SSFH021010	1005.28	160	24	24	22	62.83	125.66	8	8	7	11	7	31.3	942.7	5.7
SSFH030510	508.95	54	29	29	26	63.62	127.23	4	9	10	15	9	34.4	440.1	7.7
SSFH031010	1017.9	108	29	29	26	63.62	127.23	8	9	10	15	9	34.4	949.1	7.7
SSFH040510	502.64	40	39	39	35	62.83	125.66	4	12	10	15	9	37.5	427.7	7.7
SSFH041010	1005.28	80	39	39	35	62.83	125.66	8	12	10	15	9	37.5	930.3	7.7
SSFH050510	502.65	32	49	39	34	62.83	125.66	4	12	14	20	13	30.1	442.4	11.7
SSFH051010	1005.31	64	49	39	34	62.83	125.66	8	12	14	20	13	30.1	945	11.7
SSFH060510	508.95	27	59	49	43	63.62	127.23	4	16	18	26	17	31.4	446.1	15.7
SSFH061010	1017.9	54	59	49	43	63.62	127.23	8	16	18	26	17	31.4	955.0	15.7
SSFH080510	502.64	20	79	79	71	62.83	125.66	4	25	22	33	21	26.6	449.5	19.7
SSFH081010	1005.28	40	79	79	71	62.83	125.66	8	25	22	33	21	26.6	952	19.7

## 規格 Specifications

精度等級 Precision grade	DIN10e27	齒面硬度 Tooth hardness	50 ~ 55HRC
齒型 Gear teeth	直齒 Straight	表面處理 Surface treatment	精切削 Finish cutting
壓力角 Pressure angle	20°	齒面處理 Treatment of Tooth	精切削 Finish cutting
材質 Material	S45C	熱處理 Heat treatment	齒面高周波熱處理 Tooth surface induction hardened

# Precision Rack

RSGH-DIN5



單位/Dimension : mm

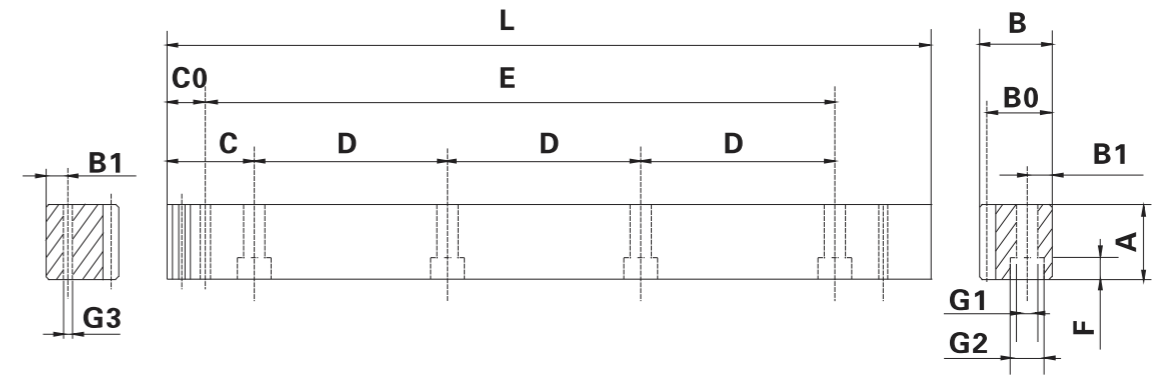
產品型號 Catalog No.	L	齒數 Tooth No.	A	B	B0	C	D	孔數 Hole No.	B1	G1	G2	F	C0	E	G3
RSGH1.50505	499.51	106	17	17	15.5	62.44	124.88	4	8	6	9.5	7	29.0	441.5	5.7
RSGH1.51005	999.03	212	17	17	15.5	62.44	124.88	8	8	6	9.5	7	29.0	941.0	5.7
RSGH020505	502.64	80	24	24	22	62.83	125.66	4	8	7	11	7	31.3	440.1	5.7
RSGH021005	1005.28	160	24	24	22	62.83	125.66	8	8	7	11	7	31.3	942.7	5.7
RSGH030505	508.95	54	29	29	26	63.62	127.23	4	9	10	15	9	34.4	440.1	7.7
RSGH031005	1017.9	108	29	29	26	63.62	127.23	8	9	10	15	9	34.4	949.1	7.7
RSGH040505	502.64	40	39	39	35	62.83	125.66	4	12	10	15	9	37.5	427.7	7.7
RSGH041005	1005.28	80	39	39	35	62.83	125.66	8	12	10	15	9	37.5	930.3	7.7
RSGH050505	502.65	32	49	39	34	62.83	125.66	4	12	14	20	13	30.1	442.4	11.7
RSGH051005	1005.31	64	49	39	34	62.83	125.66	8	12	14	20	13	30.1	945	11.7
RSGH060505	508.95	27	59	49	43	63.62	127.23	4	16	18	26	17	31.4	446.1	15.7
RSGH061005	1017.9	54	59	49	43	63.62	127.23	8	16	18	26	17	31.4	955.0	15.7
RSGH080505	502.64	20	79	79	71	62.83	125.66	4	25	22	33	21	26.6	449.5	19.7
RSGH081005	1005.28	40	79	79	71	62.83	125.66	8	25	22	33	21	26.6	952	19.7

## 規格 Specifications

精度等級 Precision grade	DIN5h22	齒面硬度 Tooth hardness	50 ~ 55HRC
齒型 Gear teeth	直齒 Straight	表面處理 Surface treatment	研磨 Grinding
壓力角 Pressure angle	20°	齒面處理 Treatment of Tooth	研磨 Grinding
材質 Material	SCM440	熱處理 Heat treatment	齒面高周波熱處理 Tooth surface induction hardened

# Precision Rack

RSGH-DIN5



單位/Dimension : mm

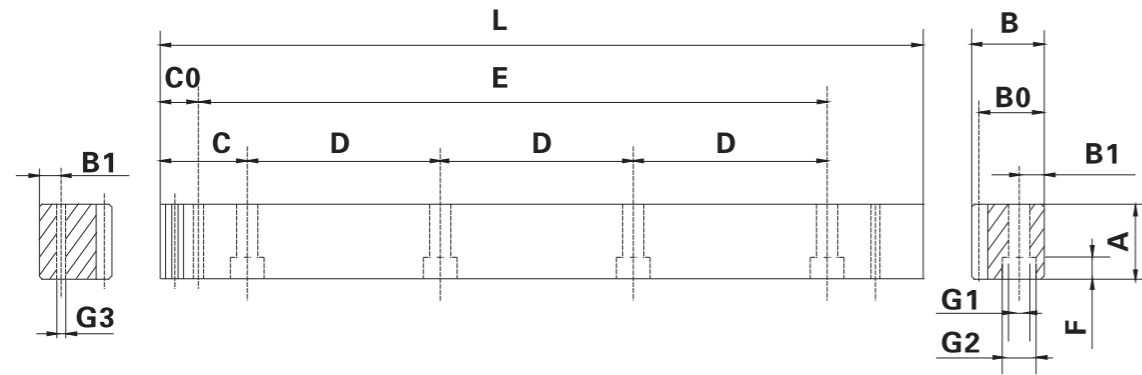
產品型號 Catalog No.	L	齒數 Tooth No.	A	B	B0	C	D	孔數 Hole No.	B1	G1	G2	F	C0	E	G3
RSGH021505	1507.97	240	24	24	22	62.83	125.66	12	8	7	11	7	31.3	942.7	5.7
RSGH022005	2010.62	320	24	24	22	62.83	125.66	16	8	7	11	7	31.3	1948.0	5.7
RSGH031505	1526.82	162	29	29	26	63.62	127.23	12	9	10	15	9	34.4	949.10	7.7
RSGH032005	2035.75	216	29	29	26	63.62	127.23	16	9	10	15	9	34.4	1967.0	7.7
RSGH041505	1507.90	120	39	39	35	62.83	125.66	12	12	10	15	9	37.5	1432.9	7.7
RSGH042005	2010.62	160	39	39	35	62.83	125.66	16	12	10	15	9	37.5	1935.6	7.7

## 規格 Specifications

精度等級 Precision grade	DIN5h22	齒面硬度 Tooth hardness	50 ~ 55HRC
齒型 Gear teeth	直齒 Straight	表面處理 Surface treatment	研磨 Grinding
壓力角 Pressure angle	20°	齒面處理 Treatment of Tooth	研磨 Grinding
材質 Material	SCM440	熱處理 Heat treatment	齒面高周波熱處理 Tooth surface induction hardened

# Precision Rack

## RSGH-DIN6



單位/Dimension : mm

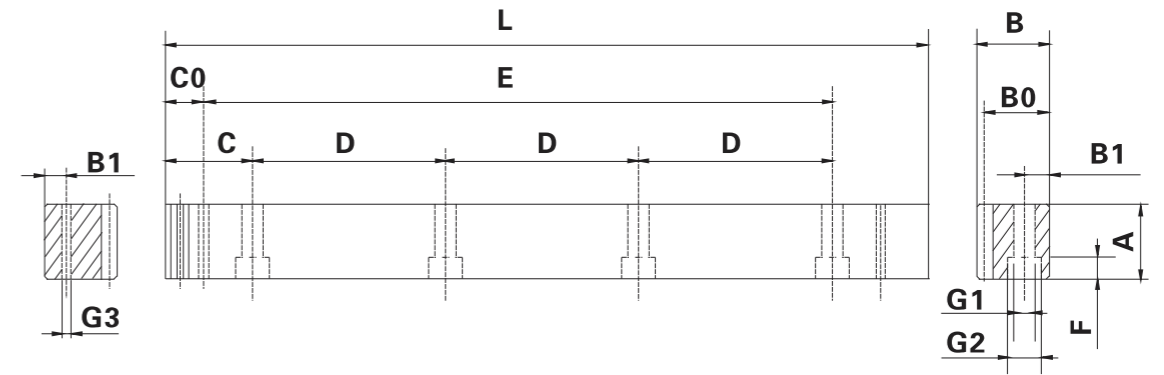
產品型號 Catalog No.	L	齒數 Tooth No.	A	B	B0	C	D	孔數 Hole No.	B1	G1	G2	F	C0	E	G3
RSGH1.50506	499.51	106	17	17	15.5	62.44	124.88	4	8	6	9.5	7	29.0	441.5	5.7
RSGH1.51006	999.03	212	17	17	15.5	62.44	124.88	8	8	6	9.5	7	29.0	941.0	5.7
RSGH020506	502.64	80	24	24	22	62.83	125.66	4	8	7	11	7	31.3	440.1	5.7
RSGH021006	1005.28	160	24	24	22	62.83	125.66	8	8	7	11	7	31.3	942.7	5.7
RSGH030506	508.95	54	29	29	26	63.62	127.23	4	9	10	15	9	34.4	440.1	7.7
RSGH031006	1017.9	108	29	29	26	63.62	127.23	8	9	10	15	9	34.4	949.1	7.7
RSGH040506	502.64	40	39	39	35	62.83	125.66	4	12	10	15	9	37.5	427.7	7.7
RSGH041006	1005.28	80	39	39	35	62.83	125.66	8	12	10	15	9	37.5	930.3	7.7
RSGH050506	502.65	32	49	39	34	62.83	125.66	4	12	14	20	13	30.1	442.4	11.7
RSGH051006	1005.31	64	49	39	34	62.83	125.66	8	12	14	20	13	30.1	945	11.7
RSGH060506	508.95	27	59	49	43	63.62	127.23	4	16	18	26	17	31.4	446.1	15.7
RSGH061006	1017.9	54	59	49	43	63.62	127.23	8	16	18	26	17	31.4	955.0	15.7
RSGH080506	502.64	20	79	79	71	62.83	125.66	4	25	22	33	21	26.6	449.5	19.7
RSGH081006	1005.28	40	79	79	71	62.83	125.66	8	25	22	33	21	26.6	952	19.7

### 規格 Specifications

精度等級 Precision grade	DIN6h25	齒面硬度 Tooth hardness	50 ~ 55HRC
齒型 Gear teeth	直齒 Straight	表面處理 Surface treatment	研磨 Grinding
壓力角 Pressure angle	20°	齒面處理 Treatment of Tooth	研磨 Grinding
材質 Material	SCM440	熱處理 Heat treatment	齒面高周波熱處理 Tooth surface induction hardened

# Precision Rack

## RSGH-DIN6



單位/Dimension : mm

產品型號 Catalog No.	L	齒數 Tooth No.	A	B	B0	C	D	孔數 Hole No.	B1	G1	G2	F	C0	E	G3
RSGH021506	1507.97	240	24	24	22	62.83	125.66	12	8	7	11	7	31.3	942.7	5.7
RSGH022006	2010.62	320	24	24	22	62.83	125.66	16	8	7	11	7	31.3	1948.0	5.7
RSGH031506	1526.82	162	29	29	26	63.62	127.23	12	9	10	15	9	34.4	949.10	7.7
RSGH032006	2035.75	216	29	29	26	63.62	127.23	16	9	10	15	9	34.4	1967.0	7.7
RSGH041506	1507.90	120	39	39	35	62.83	125.66	12	12	10	15	9	37.5	1432.9	7.7
RSGH042006	2010.62	160	39	39	35	62.83	125.66	16	12	10	15	9	37.5	1935.6	7.7
RSGH051506	1507.96	96	49	49	34	62.83	125.66	12	12	14	20	13	30.1	1447.7	11.7
RSGH052006	2010.62	128	49	49	34	62.83	125.66	16	12	14	20	13	30.1	1950.4	11.7
RSGH061506	1526.81	81	59	59	43	63.62	127.23	12	16	18	26	17	31.4	1464.0	15.7
RSGH062006	2035.75	108	59	59	43	63.62	127.23	16	16	18	26	17	31.4	1973.0	15.7
RSGH082006	2010.61	80	79	79	71	62.83	125.66	16	25	22	33	21	26.6	1957.3	19.7

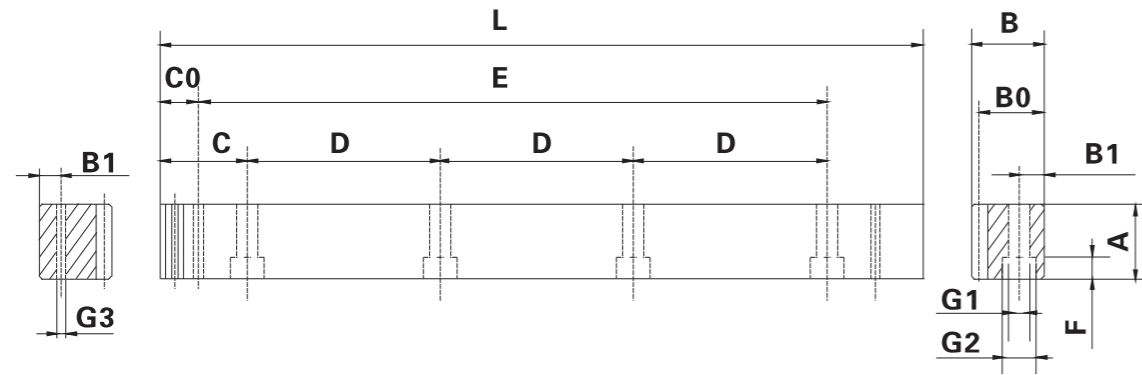
### 規格 Specifications

精度等級 Precision grade	DIN6h25	齒面硬度 Tooth hardness	50 ~ 55HRC
齒型 Gear teeth	直齒 Straight	表面處理 Surface treatment	研磨 Grinding
壓力角 Pressure angle	20°	齒面處理 Treatment of Tooth	研磨 Grinding
材質 Material	SCM440	熱處理 Heat treatment	齒面高周波熱處理 Tooth surface induction hardened



# Precision Rack

## RSGH-DIN6M



單位/Dimension : mm

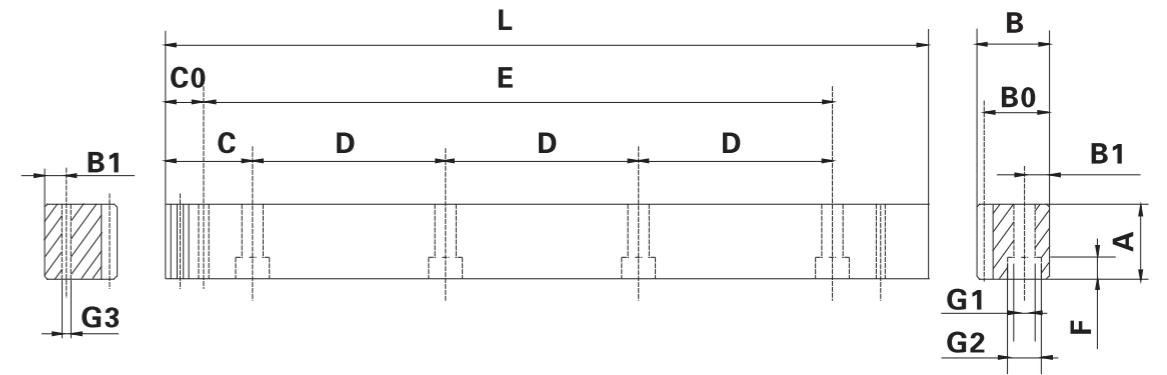
產品型號 Catalog No.	L	齒數 Tooth No.	A	B	B0	C	D	孔數 Hole No.	B1	G1	G2	F	C0	E	G3
RSGH1.50506M	499.51	106	17	17	15.5	62.44	124.88	4	8	6	9.5	7	29.0	441.5	5.7
RSGH1.51006M	999.03	212	17	17	15.5	62.44	124.88	8	8	6	9.5	7	29.0	941.0	5.7
RSGH020506M	502.64	80	24	24	22	62.83	125.66	4	8	7	11	7	31.3	440.1	5.7
RSGH021006M	1005.28	160	24	24	22	62.83	125.66	8	8	7	11	7	31.3	942.7	5.7
RSGH030506M	508.95	54	29	29	26	63.62	127.23	4	9	10	15	9	34.4	440.1	7.7
RSGH031006M	1017.9	108	29	29	26	63.62	127.23	8	9	10	15	9	34.4	949.1	7.7
RSGH040506M	502.64	40	39	39	35	62.83	125.66	4	12	10	15	9	37.5	427.7	7.7
RSGH041006M	1005.28	80	39	39	35	62.83	125.66	8	12	10	15	9	37.5	930.3	7.7
RSGH050506M	502.65	32	49	39	34	62.83	125.66	4	12	14	20	13	30.1	442.4	11.7
RSGH051006M	1005.31	64	49	39	34	62.83	125.66	8	12	14	20	13	30.1	945	11.7
RSGH060506M	508.95	27	59	49	43	63.62	127.23	4	16	18	26	17	31.4	446.1	15.7
RSGH061006M	1017.9	54	59	49	43	63.62	127.23	8	16	18	26	17	31.4	955.0	15.7
RSGH080506M	502.64	20	79	79	71	62.83	125.66	4	25	22	33	21	26.6	449.5	19.7
RSGH081006M	1005.28	40	79	79	71	62.83	125.66	8	25	22	33	21	26.6	952	19.7

### 規格 Specifications

精度等級 Precision grade	DIN6Mh25	齒面硬度 Tooth hardness	50 ~ 55HRC
齒型 Gear teeth	直齒 Straight	表面處理 Surface treatment	研磨 Grinding
壓力角 Pressure angle	20°	齒面處理 Treatment of Tooth	研磨 Grinding
材質 Material	SCM440	熱處理 Heat treatment	齒面高周波熱處理 Tooth surface induction hardened

# Precision Rack

## RSFQ-DIN7



單位/Dimension : mm

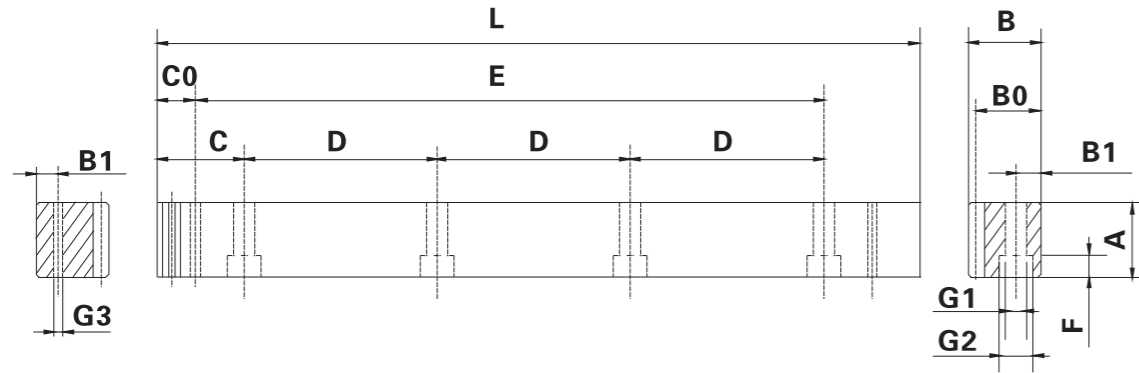
產品型號 Catalog No.	L	齒數 Tooth No.	A	B	B0	C	D	孔數 Hole No.	B1	G1	G2	F	C0	E	G3
RSFQ1.50507G	499.51	106	17	17	15.5	62.44	124.88	4	8	6	9.5	7	29.0	441.5	5.7
RSFQ1.51007G	999.03	212	17	17	15.5	62.44	124.88	8	8	6	9.5	7	29.0	941.0	5.7
RSFQ020507G	502.64	80	25	24	22	62.83	125.66	4	8	7	11	7	31.3	440.1	5.7
RSFQ021007G	1005.28	160	25	24	22	62.83	125.66	8	8	7	11	7	31.3	942.7	5.7
RSFQ030507G	508.95	54	30	29	26	63.62	127.23	4	9	10	15	9	34.4	440.1	7.7
RSFQ031007G	1017.9	108	30	29	26	63.62	127.23	8	9	10	15	9	34.4	949.1	7.7
RSFQ040507G	502.64	40	40	39	35	62.83	125.66	4	12	10	15	9	37.5	427.7	7.7
RSFQ041007G	1005.28	80	40	39	35	62.83	125.66	8	12	10	15	9	37.5	930.3	7.7
RSFQ050507G	502.65	32	50	39	34	62.83	125.66	4	12	14	20	13	30.1	442.4	11.7
RSFQ051007G	1005.31	64	50	39	34	62.83	125.66	8	12	14	20	13	30.1	945	11.7
RSFQ060507G	508.95	27	59	49	43	63.62	127.23	4	16	18	26	17	31.4	446.1	15.7
RSFQ061007G	1017.9	54	59	49	43	63.62	127.23	8	16	18	26	17	31.4	955.0	15.7
RSFQ080507G	502.64	20	79	79	71	62.83	125.66	4	25	22	33	21	26.6	449.5	19.7
RSFQ081007G	1005.28	40	79	79	71	62.83	125.66	8	25	22	33	21	26.6	952	19.7

### 規格 Specifications

精度等級 Precision grade	DIN7e25	齒面硬度 Tooth hardness	15 ~ 20HRC
齒型 Gear teeth	直齒 Straight	表面處理 Surface treatment	研磨 Grinding
壓力角 Pressure angle	20°	齒面處理 Treatment of Tooth	精切削 Finish cutting
材質 Material	SCM440	熱處理 Heat treatment	調質熱處理 Quenched

# Precision Rack

RSFQ-DIN8



單位/Dimension : mm

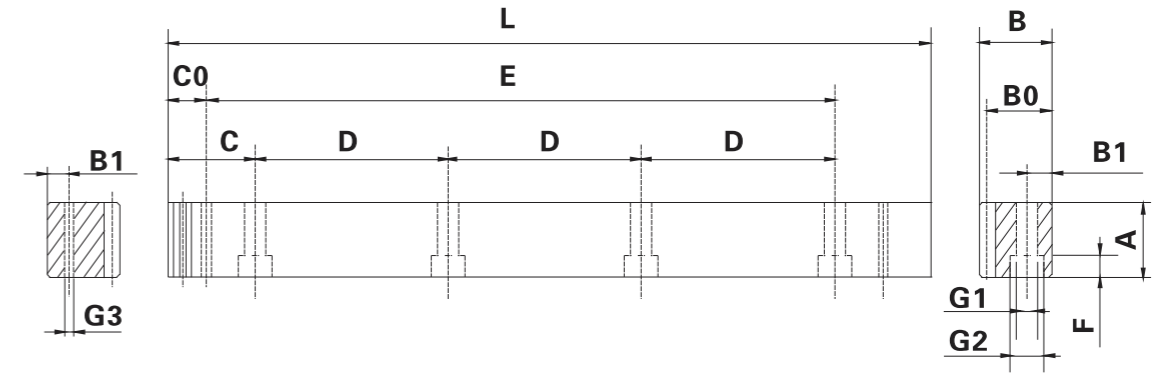
產品型號 Catalog No.	L	齒數 Tooth No.	A	B	B0	C	D	孔數 Hole No.	B1	G1	G2	F	C0	E	G3
RSFQ1.50508	499.51	106	17	17	15.5	62.44	124.88	4	8	6	9.5	7	29.0	441.5	5.7
RSFQ1.51008	999.03	212	17	17	15.5	62.44	124.88	8	8	6	9.5	7	29.0	941.0	5.7
RSFQ020508	502.64	80	25	24	22	62.83	125.66	4	8	7	11	7	31.3	440.1	5.7
RSFQ021008	1005.28	160	25	24	22	62.83	125.66	8	8	7	11	7	31.3	942.7	5.7
RSFQ030508	508.95	54	30	29	26	63.62	127.23	4	9	10	15	9	34.4	440.1	7.7
RSFQ031008	1017.9	108	30	29	26	63.62	127.23	8	9	10	15	9	34.4	949.1	7.7
RSFQ040508	502.64	40	40	39	35	62.83	125.66	4	12	10	15	9	37.5	427.7	7.7
RSFQ041008	1005.28	80	40	39	35	62.83	125.66	8	12	10	15	9	37.5	930.3	7.7
RSFQ050508	502.65	32	50	39	34	62.83	125.66	4	12	14	20	13	30.1	442.4	11.7
RSFQ051008	1005.31	64	50	39	34	62.83	125.66	8	12	14	20	13	30.1	945	11.7
RSFQ060508	508.95	27	59	49	43	63.62	127.23	4	16	18	26	17	31.4	446.1	15.7
RSFQ061008	1017.9	54	59	49	43	63.62	127.23	8	16	18	26	17	31.4	955.0	15.7
RSFQ080508	502.64	20	79	79	71	62.83	125.66	4	25	22	33	21	26.6	449.5	19.7
RSFQ081008	1005.28	40	79	79	71	62.83	125.66	8	25	22	33	21	26.6	952	19.7

## 規格 Specifications

精度等級 Precision grade	DIN8e27	齒面硬度 Tooth hardness	15 ~ 20HRC
齒型 Gear teeth	直齒 Straight	表面處理 Surface treatment	精切削 Finish cutting
壓力角 Pressure angle	20°	齒面處理 Treatment of Tooth	精切削 Finish cutting
材質 Material	SCM440	熱處理 Heat treatment	調質熱處理 Quenched

# Precision Rack

RSFH-DIN9



單位/Dimension : mm

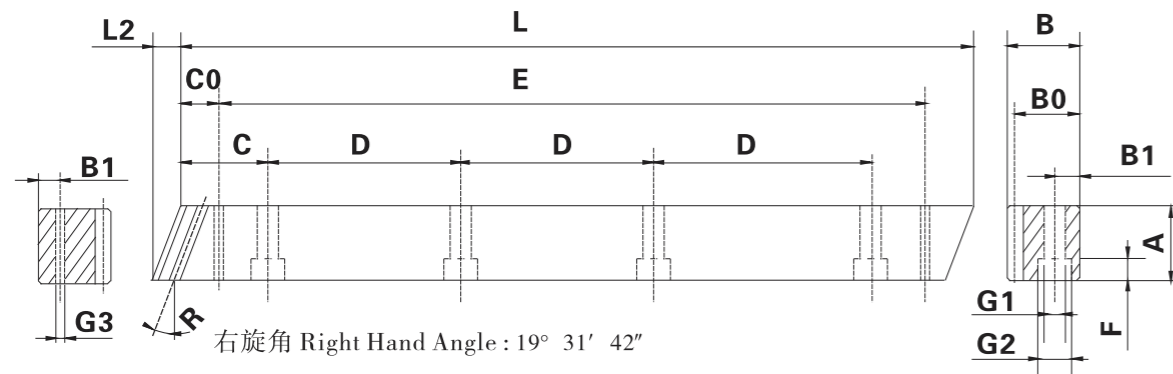
產品型號 Catalog No.	L	齒數 Tooth No.	A	B	B0	C	D	孔數 Hole No.	B1	G1	G2	F	C0	E	G3
RSFH1.50509G	499.51	106	17	17	15.5	62.44	124.88	4	8	6	9.5	7	29.0	441.5	5.7
RSFH1.51009G	999.03	212	17	17	15.5	62.44	124.88	8	8	6	9.5	7	29.0	941.0	5.7
RSFH020509G	502.64	80	24	24	22	62.83	125.66	4	8	7	11	7	31.3	440.1	5.7
RSFH021009G	1005.28	160	24	24	22	62.83	125.66	8	8	7	11	7	31.3	942.7	5.7
RSFH030509G	508.95	54	29	29	26	63.62	127.23	4	9	10	15	9	34.4	440.1	7.7
RSFH031009G	1017.9	108	29	29	26	63.62	127.23	8	9	10	15	9	34.4	949.1	7.7
RSFH040509G	502.64	40	39	39	35	62.83	125.66	4	12	10	15	9	37.5	427.7	7.7
RSFH041009G	1005.28	80	39	39	35	62.83	125.66	8	12	10	15	9	37.5	930.3	7.7
RSFH050509G	502.65	32	49	39	34	62.83	125.66	4	12	14	20	13	30.1	442.4	11.7
RSFH051009G	1005.31	64	49	39	34	62.83	125.66	8	12	14	20	13	30.1	945	11.7
RSFH060509G	508.95	27	59	49	43	63.62	127.23	4	16	18	26	17	31.4	446.1	15.7
RSFH061009G	1017.9	54	59	49	43	63.62	127.23	8	16	18	26	17	31.4	955.0	15.7
RSFH080509G	502.64	20	79	79	71	62.83	125.66	4	25	22	33	21	26.6	449.5	19.7
RSFH081009G	1005.28	40	79	79	71	62.83	125.66	8	25	22	33	21	26.6	952	19.7

## 規格 Specifications

精度等級 Precision grade	DIN9e27	齒面硬度 Tooth hardness	50 ~ 55HRC
齒型 Gear teeth	直齒 Straight	表面處理 Surface treatment	研磨 Grinding
壓力角 Pressure angle	20°	齒面處理 Treatment of Tooth	精切削 Finish cutting
材質 Material	SCM440	熱處理 Heat treatment	齒面高周波熱處理 Tooth surface induction hardened

# Precision Rack

SHGH-DIN5



單位/Dimension : mm

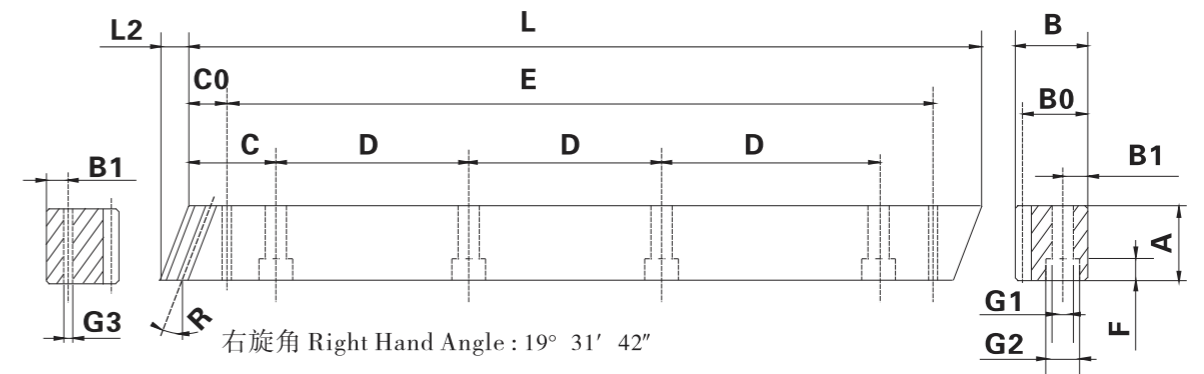
產品型號 Catalog No.	L	L2	齒數 Tooth No.	A	B	B0	C	D	孔數 Hole No.	B1	G1	G2	F	C0	E	G3
SHGH1.50505	500.00	6	100	17	17	15.5	62.50	125	4	8	6	9.5	7	31.7	436.6	5.7
SHGH1.51005	1000.0	6	200	17	17	15.5	62.50	125	8	8	6	9.5	7	31.7	936.6	5.7
SHGH020505	500.00	8.5	75	24	24	22	62.50	125	4	8	7	11	7	31.7	436.6	5.7
SHGH021005	1000.0	8.5	150	24	24	22	62.50	125	8	8	7	11	7	31.7	936.6	5.7
SHGH030505	500.00	10.3	50	29	29	26	62.50	125	4	9	10	15	9	35.0	430.0	7.7
SHGH031005	1000.0	10.3	100	29	29	26	62.50	125	8	9	10	15	9	35.0	930.0	7.7
SHGH040505	506.67	13.8	38	39	39	35	62.50	125	4	12	10	15	9	33.3	433.0	7.7
SHGH041005	1000.0	13.8	75	39	39	35	62.50	125	8	12	10	15	9	33.3	933.4	7.7
SHGH050505	500.00	17.4	30	49	39	34	62.50	125	4	12	14	20	13	37.5	425.0	11.7
SHGH051005	1000.0	17.4	60	49	39	34	62.50	125	8	12	14	20	13	37.5	925.0	11.7
SHGH060505	500.00	20.9	25	59	49	43	62.50	125	4	16	18	26	17	37.5	425.0	15.7
SHGH061005	1000.0	20.9	50	59	49	43	62.50	125	8	16	18	26	17	37.5	925.0	15.7
SHGH080505	480.00	28.0	18	79	79	71	60.00	120	4	25	22	33	21	120.0	240.0	17.7
SHGH081005	960.00	28.0	36	79	79	71	60.00	120	8	25	22	33	21	120.0	720.0	17.7

規格 Specifications

精度等級 Precision grade	DIN5h22	齒面硬度 Tooth hardness	50 ~ 55HRC
齒型 Gear teeth	斜齒 Helical	表面處理 Surface treatment	研磨 Grinding
壓力角 Pressure angle	20°	齒面處理 Treatment of Tooth	研磨 Grinding
材質 Material	S45C	熱處理 Heat treatment	齒面高周波熱處理 Tooth surface induction hardened
右旋角 Right Hand Angle	19° 31' 42"		

# Precision Rack

SHGH-DIN5



單位/Dimension : mm

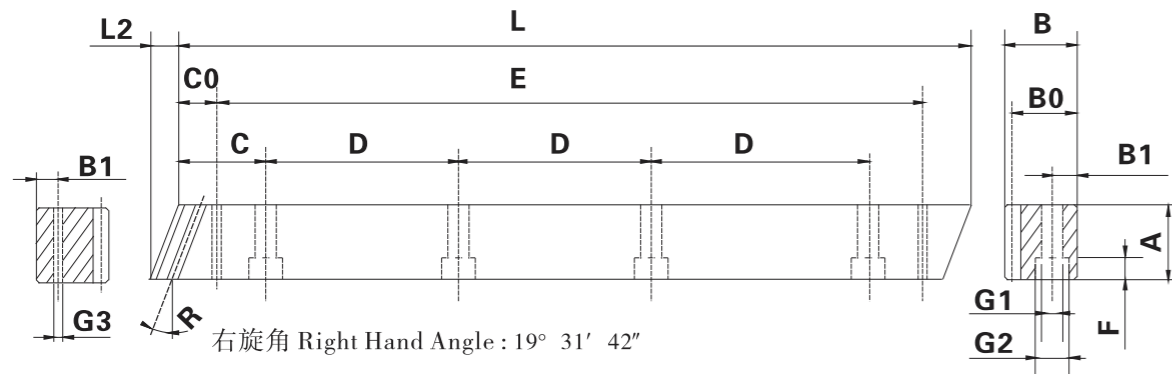
產品型號 Catalog No.	L	L2	齒數 Tooth No.	A	B	B0	C	D	孔數 Hole No.	B1	G1	G2	F	C0	E	G3
SHGH021505	1500	8.5	225	24	24	22	62.50	125	12	8	7	11	7	31.7	1436.6	5.7
SHGH022005	2000	8.5	300	24	24	22	62.50	125	16	8	7	11	7	31.7	1936.6	5.7
SHGH031505	1500	10.3	150	29	29	26	62.50	125	12	9	10	15	9	35	1430	7.7
SHGH032005	2000	10.3	200	29	29	26	62.50	125	16	9	10	15	9	35	1930	7.7
SHGH041505	1506.67	13.8	113	39	39	35	62.50	125	12	12	10	15	9	33.3	1440.1	11.7
SHGH042005	2000	13.8	150	39	39	35	62.50	125	16	12	10	15	9	33.3	1933.4	11.7

規格 Specifications

精度等級 Precision grade	DIN5h22	齒面硬度 Tooth hardness	50 ~ 55HRC
齒型 Gear teeth	斜齒 Helical	表面處理 Surface treatment	研磨 Grinding
壓力角 Pressure angle	20°	齒面處理 Treatment of Tooth	研磨 Grinding
材質 Material	S45C	熱處理 Heat treatment	齒面高周波熱處理 Tooth surface induction hardened
右旋角 Right Hand Angle	19° 31' 42"		

# Precision Rack

SHGH-DIN6



單位/Dimension : mm

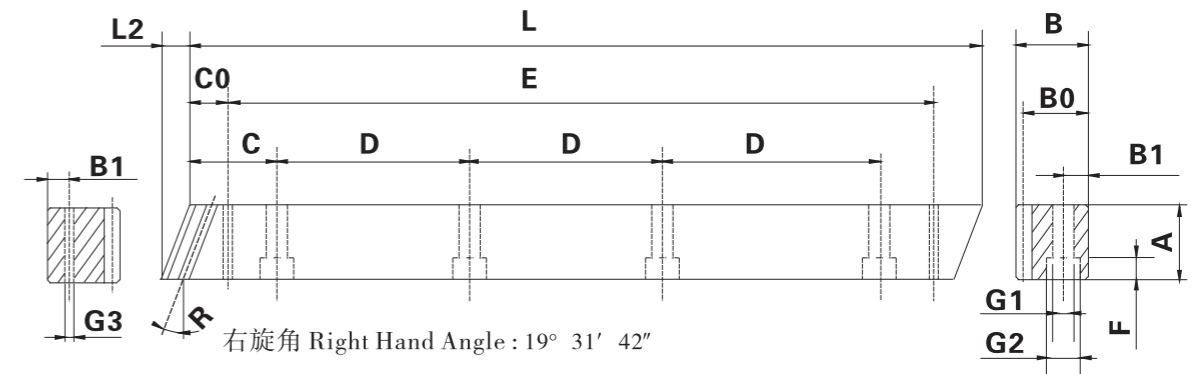
產品型號 Catalog No.	L	L2	齒數 Tooth No.	A	B	B0	C	D	孔數 Hole No.	B1	G1	G2	F	C0	E	G3
SHGH1.50506	500.00	6	100	17	17	15.5	62.50	125	4	8	6	9.5	7	31.7	436.6	5.7
SHGH1.51006	1000.0	6	200	17	17	15.5	62.50	125	8	8	6	9.5	7	31.7	936.6	5.7
SHGH020506	500.00	8.5	75	24	24	22	62.50	125	4	8	7	11	7	31.7	436.6	5.7
SHGH021006	1000.0	8.5	150	24	24	22	62.50	125	8	8	7	11	7	31.7	936.6	5.7
SHGH030506	500.00	10.3	50	29	29	26	62.50	125	4	9	10	15	9	35.0	430.0	7.7
SHGH031006	1000.0	10.3	100	29	29	26	62.50	125	8	9	10	15	9	35.0	930.0	7.7
SHGH040506	506.67	13.8	38	39	39	35	62.50	125	4	12	10	15	9	33.3	433.0	7.7
SHGH041006	1000.0	13.8	75	39	39	35	62.50	125	8	12	10	15	9	33.3	933.4	7.7
SHGH050506	500.00	17.4	30	49	39	34	62.50	125	4	12	14	20	13	37.5	425.0	11.7
SHGH051006	1000.0	17.4	60	49	39	34	62.50	125	8	12	14	20	13	37.5	925.0	11.7
SHGH060506	500.00	20.9	25	59	49	43	62.50	125	4	16	18	26	17	37.5	425.0	15.7
SHGH061006	1000.0	20.9	50	59	49	43	62.50	125	8	16	18	26	17	37.5	925.0	15.7
SHGH080506	480.00	28.0	18	79	79	71	60.00	120	4	25	22	33	21	120.0	240.0	17.7
SHGH081006	960.00	28.0	36	79	79	71	60.00	120	8	25	22	33	21	120.0	720.0	17.7

規格 Specifications

精度等級 Precision grade	DIN6h25	齒面硬度 Tooth hardness	50 ~ 55HRC
齒型 Gear teeth	斜齒 Helical	表面處理 Surface treatment	研磨 Grinding
壓力角 Pressure angle	20°	齒面處理 Treatment of Tooth	研磨 Grinding
材質 Material	S45C	熱處理 Heat treatment	齒面高周波熱處理 Tooth surface induction hardened
右旋角 Right Hand Angle	19° 31' 42"		

# Precision Rack

SHGH-DIN6



單位/Dimension : mm

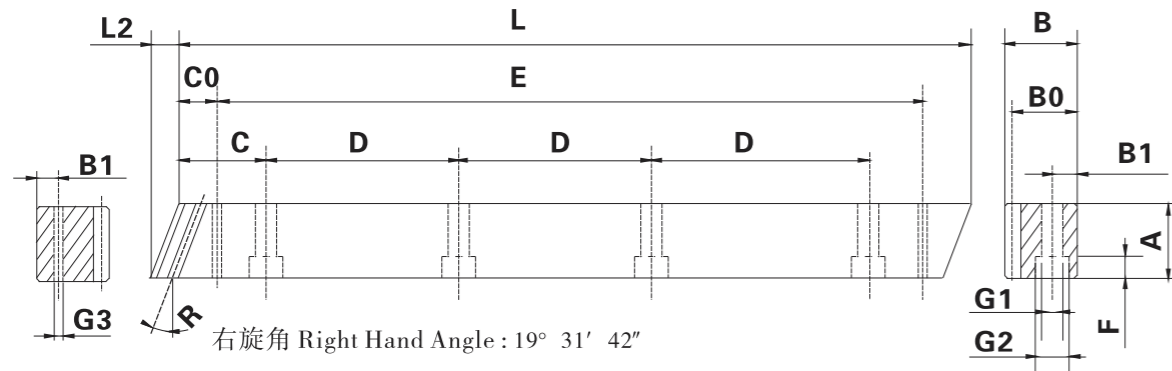
產品型號 Catalog No.	L	L2	齒數 Tooth No.	A	B	B0	C	D	孔數 Hole No.	B1	G1	G2	F	C0	E	G3
SHGH021506	1500	8.5	225	24	24	22	62.5	125	12	8	7	11	7	31.7	1436.6	5.7
SHGH022006	2000	8.5	300	24	24	22	62.5	125	16	8	7	11	7	31.7	1936.6	5.7
SHGH031506	1500	10.3	150	29	29	26	62.5	125	12	9	10	15	9	35	1430	7.7
SHGH032006	2000	10.3	200	29	29	26	62.5	125	16	9	10	15	9	35	1930	7.7
SHGH041506	1506.67	13.8	113	39	39	35	62.5	125	12	12	10	15	9	33.3	1440.1	7.7
SHGH042006	2000	13.8	150	39	39	35	62.5	125	16	12	10	15	9	33.3	1933.4	7.7
SHGH051506	1500	17.4	90	49	39	34	62.5	125	12	12	14	20	13	37.5	1425	11.7
SHGH052006	2000	17.4	120	49	39	34	62.5	125	16	12	14	20	13	37.5	1925	11.7
SHGH061506	1500	20.9	75	59	49	43	62.5	125	12	16	18	26	17	37.5	1425	15.7
SHGH062006	2000	20.9	100	59	49	43	62.5	125	16	16	18	26	17	37.5	1925	15.7
SHGH081506	1440	28.0	54	79	79	71	60.0	120	12	25	22	33	21	120	1240	17.7
SHGH082006	1970	28.0	72	79	79	71	60.0	120	16	25	22	33	21	120	1720	17.7

規格 Specifications

精度等級 Precision grade	DIN6h25	齒面硬度 Tooth hardness	50 ~ 55HRC
齒型 Gear teeth	斜齒 Helical	表面處理 Surface treatment	研磨 Grinding
壓力角 Pressure angle	20°	齒面處理 Treatment of Tooth	研磨 Grinding
材質 Material	S45C	熱處理 Heat treatment	齒面高周波熱處理 Tooth surface induction hardened
右旋角 Right Hand Angle	19° 31' 42"		

# Precision Rack

SHGH-DIN6M



單位/Dimension : mm

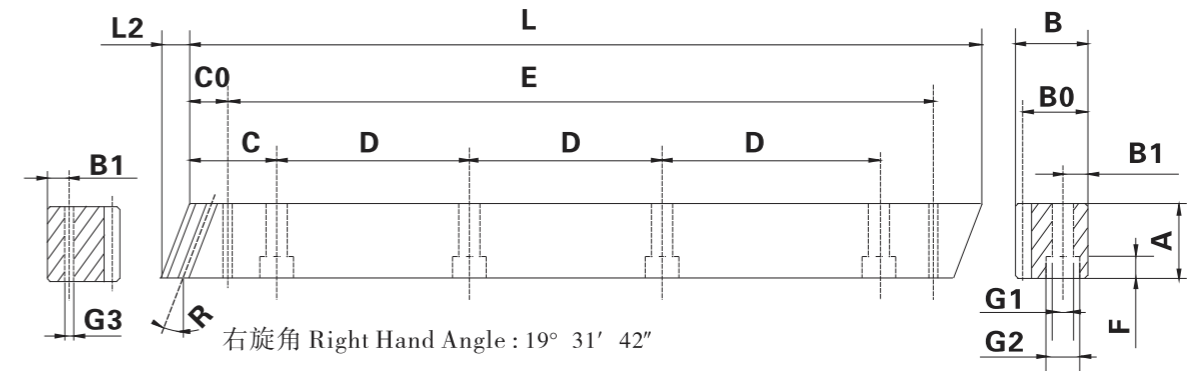
產品型號 Catalog No.	L	L2	齒數 Tooth No.	A	B	B0	C	D	孔數 Hole No.	B1	G1	G2	F	C0	E	G3
SHGH1.50506M	500.00	6	100	17	17	15.5	62.50	125	4	8	6	9.5	7	31.7	436.6	5.7
SHGH1.51006M	1000.0	6	200	17	17	15.5	62.50	125	8	8	6	9.5	7	31.7	936.6	5.7
SHGH020506M	500.00	8.5	75	24	24	22	62.50	125	4	8	7	11	7	31.7	436.6	5.7
SHGH021006M	1000.0	8.5	150	24	24	22	62.50	125	8	8	7	11	7	31.7	936.6	5.7
SHGH030506M	500.00	10.3	50	29	29	26	62.50	125	4	9	10	15	9	35.0	430.0	7.7
SHGH031006M	1000.0	10.3	100	29	29	26	62.50	125	8	9	10	15	9	35.0	930.0	7.7
SHGH040506M	506.67	13.8	38	39	39	35	62.50	125	4	12	10	15	9	33.3	433.0	7.7
SHGH041006M	1000.0	13.8	75	39	39	35	62.50	125	8	12	10	15	9	33.3	933.4	7.7
SHGH050506M	500.00	17.4	30	49	39	34	62.50	125	4	12	14	20	13	37.5	425.0	11.7
SHGH051006M	1000.0	17.4	60	49	39	34	62.50	125	8	12	14	20	13	37.5	925.0	11.7
SHGH060506M	500.00	20.9	25	59	49	43	62.50	125	4	16	18	26	17	37.5	425.0	15.7
SHGH061006M	1000.0	20.9	50	59	49	43	62.50	125	8	16	18	26	17	37.5	925.0	15.7
SHGH080506M	480.00	28.0	18	79	79	71	60.00	120	4	25	22	33	21	120.0	240.0	17.7
SHGH081006M	960.00	28.0	36	79	79	71	60.00	120	8	25	22	33	21	120.0	720.0	17.7

## 規格 Specifications

精度等級 Precision grade	DIN6Mh25	齒面硬度 Tooth hardness	50 ~ 55HRC
齒型 Gear teeth	斜齒 Helical	表面處理 Surface treatment	研磨 Grinding
壓力角 Pressure angle	20°	齒面處理 Treatment of Tooth	研磨 Grinding
材質 Material	S45C	熱處理 Heat treatment	齒面高周波熱處理 Tooth surface induction hardened
右旋角 Right Hand Angle	19° 31' 42"		

# Precision Rack

SHFQ-DIN7



單位/Dimension : mm

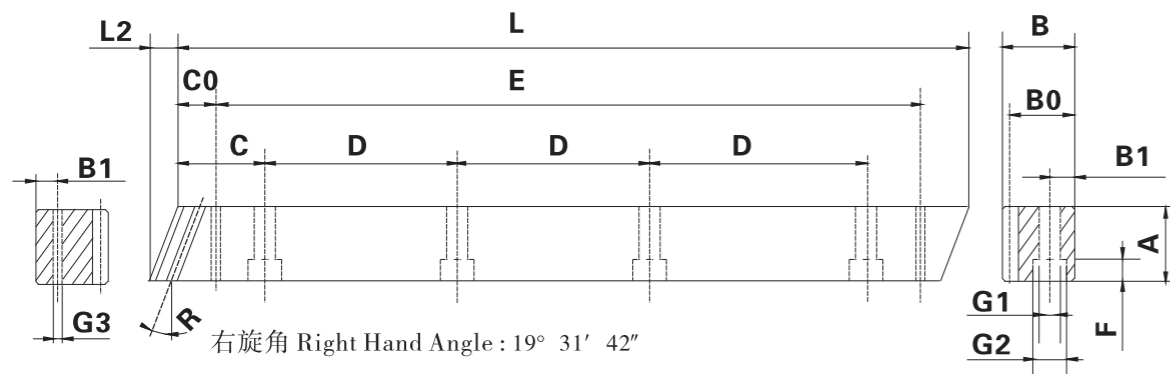
產品型號 Catalog No.	L	L2	齒數 Tooth No.	A	B	B0	C	D	孔數 Hole No.	B1	G1	G2	F	C0	E	G3
SHFQ1.50507G	500.00	6	100	17	17	15.5	62.50	125	4	8	6	9.5	7	31.7	436.6	5.7
SHFQ1.51007G	1000.0	6	200	17	17	15.5	62.50	125	8	8	6	9.5	7	31.7	936.6	5.7
SHFQ020507G	500.00	8.9	75	25	24	22	62.50	125	4	8	7	11	7	31.7	436.6	5.7
SHFQ021007G	1000.0	8.9	150	25	24	22	62.50	125	8	8	7	11	7	31.7	936.6	5.7
SHFQ030507G	500.00	10.6	50	30	29	26	62.50	125	4	9	10	15	9	35.0	430.0	7.7
SHFQ031007G	1000.0	10.6	100	30	29	26	62.50	125	8	9	10	15	9	35.0	930.0	7.7
SHFQ040507G	506.67	14.2	38	40	39	35	62.50	125	4	12	10	15	9	33.3	433.0	7.7
SHFQ041007G	1000.0	14.2	75	40	39	35	62.50	125	8	12	10	15	9	33.3	933.4	7.7
SHFQ050507G	500.00	17.7	30	50	39	34	62.50	125	4	12	14	20	13	37.5	425.0	11.7
SHFQ051007G	1000.0	17.7	60	50	39	34	62.50	125	8	12	14	20	13	37.5	925.0	11.7
SHFQ060507G	500.00	20.9	25	59	49	43	62.50	125	4	16	18	26	17	37.5	425.0	15.7
SHFQ061007G	1000.0	20.9	50	59	49	43	62.50	125	8	16	18	26	17	37.5	925.0	15.7
SHFQ080507G	480.00	28.0	18	79	79	71	60.00	120	4	25	22	33	21	120.0	240.0	17.7
SHFQ081007G	960.00	28.0	36	79	79	71	60.00	120	8	25	22	33	21	120.0	720.0	17.7

## 規格 Specifications

精度等級 Precision grade	DIN7e25	齒面硬度 Tooth hardness	15 ~ 20HRC
齒型 Gear teeth	斜齒 Helical	表面處理 Surface treatment	研磨 Grinding
壓力角 Pressure angle	20°	齒面處理 Treatment of Tooth	精切削 Finish cutting
材質 Material	S45C	熱處理 Heat treatment	調質熱處理 Quenched
右旋角 Right Hand Angle	19° 31' 42"		

# Precision Rack

## SHFQ-DIN8



單位/Dimension : mm

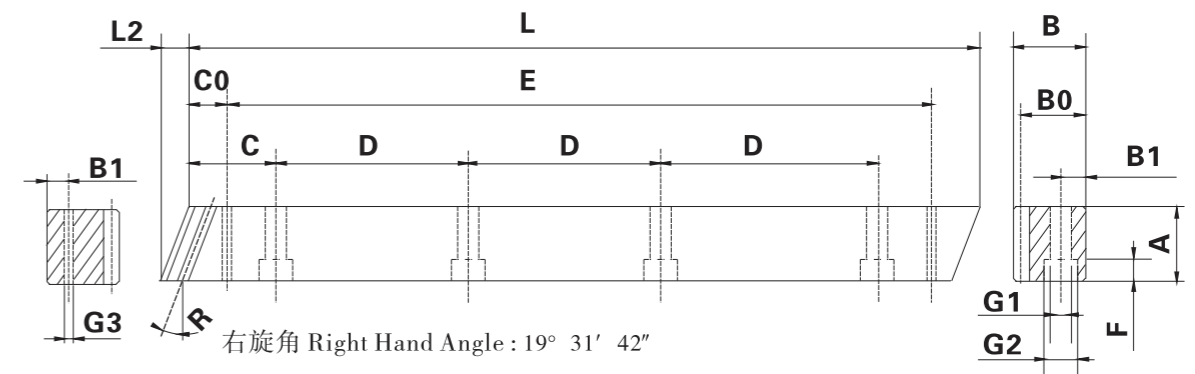
產品型號 Catalog No.	L	L2	齒數 Tooth No.	A	B	B0	C	D	孔數 Hole No.	B1	G1	G2	F	C0	E	G3
SHFQ1.50508	500.00	6	100	17	17	15.5	62.50	125	4	8	6	9.5	7	31.7	436.6	5.7
SHFQ1.51008	1000.0	6	200	17	17	15.5	62.50	125	8	8	6	9.5	7	31.7	936.6	5.7
SHFQ020508	500.00	8.9	75	25	24	22	62.50	125	4	8	7	11	7	31.7	436.6	5.7
SHFQ021008	1000.0	8.9	150	25	24	22	62.50	125	8	8	7	11	7	31.7	936.6	5.7
SHFQ030508	500.00	10.6	50	30	29	26	62.50	125	4	9	10	15	9	35.0	430.0	7.7
SHFQ031008	1000.0	10.6	100	30	29	26	62.50	125	8	9	10	15	9	35.0	930.0	7.7
SHFQ040508	506.67	14.2	38	40	39	35	62.50	125	4	12	10	15	9	33.3	433.0	7.7
SHFQ041008	1000.0	14.2	75	40	39	35	62.50	125	8	12	10	15	9	33.3	933.4	7.7
SHFQ050508	500.00	17.7	30	50	39	34	62.50	125	4	12	14	20	13	37.5	425.0	11.7
SHFQ051008	1000.0	17.7	60	50	39	34	62.50	125	8	12	14	20	13	37.5	925.0	11.7
SHFQ060508	500.00	20.9	25	59	49	43	62.50	125	4	16	18	26	17	37.5	425.0	15.7
SHFQ061008	1000.0	20.9	50	59	49	43	62.50	125	8	16	18	26	17	37.5	925.0	15.7
SHFQ080508	480.00	28.0	18	79	79	71	60.00	120	4	25	22	33	21	120.0	240.0	17.7
SHFQ081008	960.00	28.0	36	79	79	71	60.00	120	8	25	22	33	21	120.0	720.0	17.7

### 規格 Specifications

精度等級 Precision grade	DIN8e27	齒面硬度 Tooth hardness	15 ~ 20HRC
齒型 Gear teeth	斜齒 Helical	表面處理 Surface treatment	精切削 Finish cutting
壓力角 Pressure angle	20°	齒面處理 Treatment of Tooth	精切削 Finish cutting
材質 Material	S45C	熱處理 Heat treatment	調質熱處理 Quenched
右旋角 Right Hand Angle	19° 31' 42"		

# Precision Rack

## SHFH-DIN9



單位/Dimension : mm

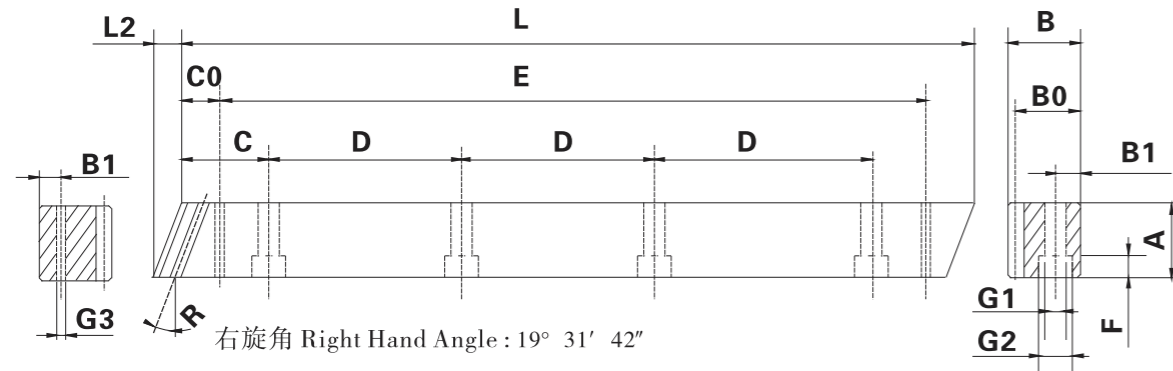
產品型號 Catalog No.	L	L2	齒數 Tooth No.	A	B	B0	C	D	孔數 Hole No.	B1	G1	G2	F	C0	E	G3
SHFH1.50509G	500.00	6	100	17	17	15.5	62.50	125	4	8	6	9.5	7	31.7	436.6	5.7
SHFH1.51009G	1000.0	6	200	17	17	15.5	62.50	125	8	8	6	9.5	7	31.7	936.6	5.7
SHFH020509G	500.00	8.5	75	24	24	22	62.50	125	4	8	7	11	7	31.7	436.6	5.7
SHFH021009G	1000.0	8.5	150	24	24	22	62.50	125	8	8	7	11	7	31.7	936.6	5.7
SHFH030509G	500.00	10.3	50	29	29	26	62.50	125	4	9	10	15	9	35.0	430.0	7.7
SHFH031009G	1000.0	10.3	100	29	29	26	62.50	125	8	9	10	15	9	35.0	930.0	7.7
SHFH040509G	506.67	13.8	38	39	39	35	62.50	125	4	12	10	15	9	33.3	433.0	7.7
SHFH041009G	1000.0	13.8	75	39	39	35	62.50	125	8	12	10	15	9	33.3	933.4	7.7
SHFH050509G	500.00	17.4	30	49	39	34	62.50	125	4	12	14	20	13	37.5	425.0	11.7
SHFH051009G	1000.0	17.4	60	49	39	34	62.50	125	8	12	14	20	13	37.5	925.0	11.7
SHFH060509G	500.00	20.9	25	59	49	43	62.50	125	4	16	18	26	17	37.5	425.0	15.7
SHFH061009G	1000.0	20.9	50	59	49	43	62.50	125	8	16	18	26	17	37.5	925.0	15.7
SHFH080509G	480.00	28.0	18	79	79	71	60.00	120	4	25	22	33	21	120.0	240.0	17.7
SHFH081009G	960.00	28.0	36	79	79	71	60.00	120	8	25	22	33	21	120.0	720.0	17.7

### 規格 Specifications

精度等級 Precision grade	DIN9e27	齒面硬度 Tooth hardness	50 ~ 55HRC
齒型 Gear teeth	斜齒 Helical	表面處理 Surface treatment	研磨 Grinding
壓力角 Pressure angle	20°	齒面處理 Treatment of Tooth	精切削 Finish cutting
材質 Material	S45C	熱處理 Heat treatment	齒面高周波熱處理 Tooth surface induction hardened
右旋角 Right Hand Angle	19° 31' 42"		

# Precision Rack

## SHF-DIN9



單位/Dimension : mm

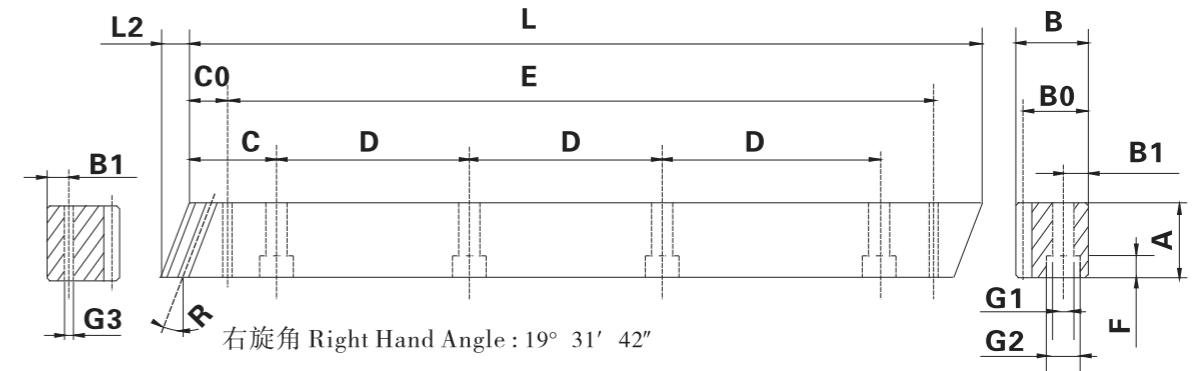
產品型號 Catalog No.	L	L2	齒數 Tooth No.	A	B	B0	C	D	孔數 Hole No.	B1	G1	G2	F	C0	E	G3
SHF1.50509	500.00	6	100	17	17	15.5	62.50	125	4	8	6	9.5	7	31.7	436.6	5.7
SHF1.51009	1000.0	6	200	17	17	15.5	62.50	125	8	8	6	9.5	7	31.7	936.6	5.7
SHF020509	500.00	8.5	75	24	24	22	62.50	125	4	8	7	11	7	31.7	436.6	5.7
SHF021009	1000.0	8.5	150	24	24	22	62.50	125	8	8	7	11	7	31.7	936.6	5.7
SHF030509	500.00	10.3	50	29	29	26	62.50	125	4	9	10	15	9	35.0	430.0	7.7
SHF031009	1000.0	10.3	100	29	29	26	62.50	125	8	9	10	15	9	35.0	930.0	7.7
SHF040509	506.67	13.8	38	39	39	35	62.50	125	4	12	10	15	9	33.3	433.0	7.7
SHF041009	1000.0	13.8	75	39	39	35	62.50	125	8	12	10	15	9	33.3	933.4	7.7
SHF050509	500.00	17.4	30	49	39	34	62.50	125	4	12	14	20	13	37.5	425.0	11.7
SHF051009	1000.0	17.4	60	49	39	34	62.50	125	8	12	14	20	13	37.5	925.0	11.7
SHF060509	500.00	20.9	25	59	49	43	62.50	125	4	16	18	26	17	37.5	425.0	15.7
SHF061009	1000.0	20.9	50	59	49	43	62.50	125	8	16	18	26	17	37.5	925.0	15.7
SHF080509	480.00	28.0	18	79	79	71	60.00	120	4	25	22	33	21	120.0	240.0	17.7
SHF081009	960.00	28.0	36	79	79	71	60.00	120	8	25	22	33	21	120.0	720.0	17.7

### 規格 Specifications

精度等級 Precision grade	DIN9e27	齒面硬度 Tooth hardness	15HRC以下
齒型 Gear teeth	斜齒 Helical	表面處理 Surface treatment	精切削 Finish cutting
壓力角 Pressure angle	20°	齒面處理 Treatment of Tooth	精切削 Finish cutting
材質 Material	S45C	熱處理 Heat treatment	—————
右旋角 Right Hand Angle	19° 31' 42"		

# Precision Rack

## SHFH-DIN10



單位/Dimension : mm

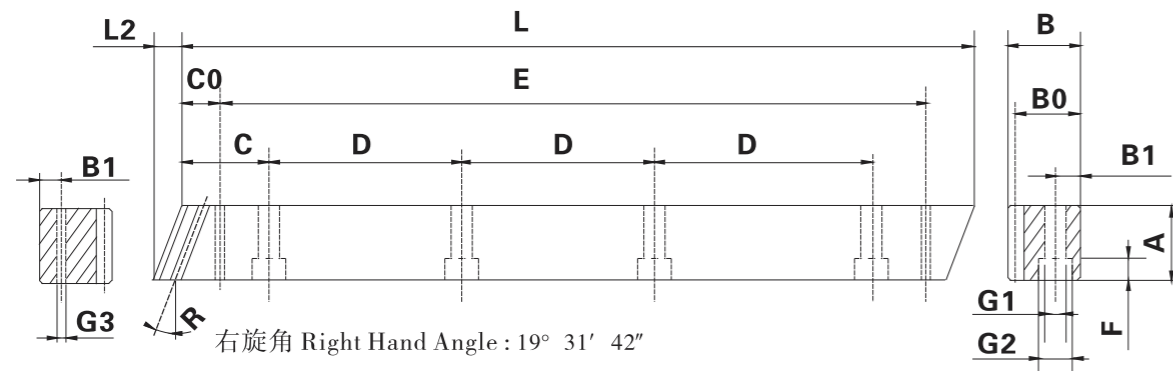
產品型號 Catalog No.	L	L2	齒數 Tooth No.	A	B	B0	C	D	孔數 Hole No.	B1	G1	G2	F	C0	E	G3
SHFH1.50510	500.00	6	100	17	17	15.5	62.50	125	4	8	6	9.5	7	31.7	436.6	5.7
SHFH1.51010	1000.0	6	200	17	17	15.5	62.50	125	8	8	6	9.5	7	31.7	936.6	5.7
SHFH020510	500.00	8.5	75	24	24	22	62.50	125	4	8	7	11	7	31.7	436.6	5.7
SHFH021010	1000.0	8.5	150	24	24	22	62.50	125	8	8	7	11	7	31.7	936.6	5.7
SHFH030510	500.00	10.3	50	29	29	26	62.50	125	4	9	10	15	9	35.0	430.0	7.7
SHFH031010	1000.0	10.3	100	29	29	26	62.50	125	8	9	10	15	9	35.0	930.0	7.7
SHFH040510	506.67	13.8	38	39	39	35	62.50	125	4	12	10	15	9	33.3	433.0	7.7
SHFH041010	1000.0	13.8	75	39	39	35	62.50	125	8	12	10	15	9	33.3	933.4	7.7
SHFH050510	500.00	17.4	30	49	39	34	62.50	125	4	12	14	20	13	37.5	425.0	11.7
SHFH051010	1000.0	17.4	60	49	39	34	62.50	125	8	12	14	20	13	37.5	925.0	11.7
SHFH060510	500.00	20.9	25	59	49	43	62.50	125	4	16	18	26	17	37.5	425.0	15.7
SHFH061010	1000.0	20.9	50	59	49	43	62.50	125	8	16	18	26	17	37.5	925.0	15.7
SHFH080510	480.00	28.0	18	79	79	71	60.00	120	4	25	22	33	21	120.0	240.0	17.7
SHFH081010	960.00	28.0	36	79	79	71	60.00	120	8	25	22	33	21	120.0	720.0	17.7

### 規格 Specifications

精度等級 Precision grade	DIN10e27	齒面硬度 Tooth hardness	50 ~ 55HRC
齒型 Gear teeth	斜齒 Helical	表面處理 Surface treatment	精切削 Finish cutting
壓力角 Pressure angle	20°	齒面處理 Treatment of Tooth	精切削 Finish cutting
材質 Material	S45C	熱處理 Heat treatment	齒面高周波熱處理 Tooth surface induction hardened
右旋角 Right Hand Angle	19° 31' 42"		

# Precision Rack

RHGH-DIN5



單位/Dimension : mm

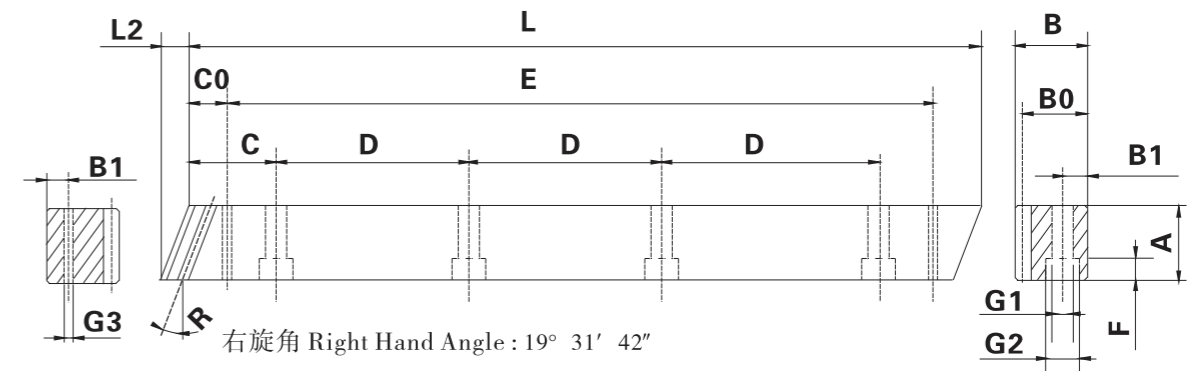
產品型號 Catalog No.	L	L2	齒數 Tooth No.	A	B	B0	C	D	孔數 Hole No.	B1	G1	G2	F	C0	E	G3
RHGH1.50505	500.00	6	100	17	17	15.5	62.50	125	4	8	6	9.5	7	31.7	436.6	5.7
RHGH1.51005	1000.0	6	200	17	17	15.5	62.50	125	8	8	6	9.5	7	31.7	936.6	5.7
RHGH020505	500.00	8.5	75	24	24	22	62.50	125	4	8	7	11	7	31.7	436.6	5.7
RHGH021005	1000.0	8.5	150	24	24	22	62.50	125	8	8	7	11	7	31.7	936.6	5.7
RHGH3-05D	500.00	10.3	50	29	29	26	62.50	125	4	9	10	15	9	35.0	430.0	7.7
RHGH3-10D	1000.0	10.3	100	29	29	26	62.50	125	8	9	10	15	9	35.0	930.0	7.7
RHGH4-05D	506.67	13.8	38	39	39	35	62.50	125	4	12	10	15	9	33.3	433.0	7.7
RHGH4-10D	1000.0	13.8	75	39	39	35	62.50	125	8	12	10	15	9	33.3	933.4	7.7
RHGH5-05D	500.00	17.4	30	49	39	34	62.50	125	4	12	14	20	13	37.5	425.0	11.7
RHGH5-10D	1000.0	17.4	60	49	39	34	62.50	125	8	12	14	20	13	37.5	925.0	11.7
RHGH6-05D	500.00	20.9	25	59	49	43	62.50	125	4	16	18	26	17	37.5	425.0	15.7
RHGH6-10D	1000.0	20.9	50	59	49	43	62.50	125	8	16	18	26	17	37.5	925.0	15.7
RHGH8-05D	480.00	28.0	18	79	79	71	60.00	120	4	25	22	33	21	120.0	240.0	17.7
RHGH8-10D	960.00	28.0	36	79	79	71	60.00	120	8	25	22	33	21	120.0	720.0	17.7

## 規格 Specifications

精度等級 Precision grade	DIN5h22	齒面硬度 Tooth hardness	50 ~ 55HRC
齒型 Gear teeth	斜齒 Helical	表面處理 Surface treatment	研磨 Grinding
壓力角 Pressure angle	20°	齒面處理 Treatment of Tooth	研磨 Grinding
材質 Material	SCM440	熱處理 Heat treatment	齒面高周波熱處理 Tooth surface induction hardened
右旋角 Right Hand Angle	19° 31' 42"		

# Precision Rack

RHGH-DIN5



單位/Dimension : mm

產品型號 Catalog No.	L	L2	齒數 Tooth No.	A	B	B0	C	D	孔數 Hole No.	B1	G1	G2	F	C0	E	G3
RHGH021505	1500	8.5	225	24	24	22	62.50	125	12	8	7	11	7	31.7	1436.6	5.7
RHGH022005	2000	8.5	300	24	24	22	62.50	125	16	8	7	11	7	31.7	1936.6	5.7
RHGH031505	1500	10.3	150	29	29	26	62.50	125	12	9	10	15	9	35	1430	7.7
RHGH032005	2000	10.3	200	29	29	26	62.50	125	16	9	10	15	9	35	1930	7.7
RHGH041505	1506.67	13.8	113	39	39	35	62.50	125	12	12	10	15	9	33.3	1433	11.7
RHGH042005	2000	13.8	150	39	39	35	62.50	125	16	12	10	15	9	33.3	1933.4	11.7

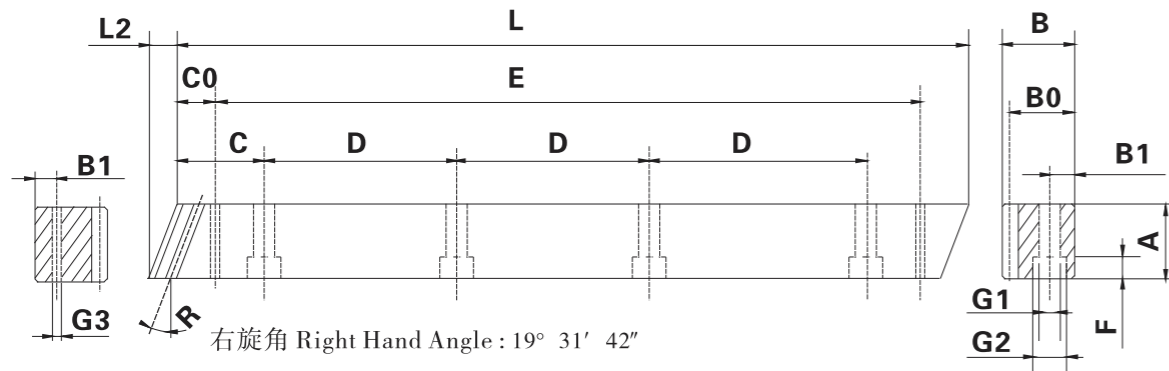
## 規格 Specifications

精度等級 Precision grade	DIN5h22	齒面硬度 Tooth hardness	50 ~ 55HRC
齒型 Gear teeth	斜齒 Helical	表面處理 Surface treatment	研磨 Grinding
壓力角 Pressure angle	20°	齒面處理 Treatment of Tooth	研磨 Grinding
材質 Material	SCM440	熱處理 Heat treatment	齒面高周波熱處理 Tooth surface induction hardened
右旋角 Right Hand Angle	19° 31' 42"		



# Precision Rack

## RHGH-DIN6



單位/Dimension : mm

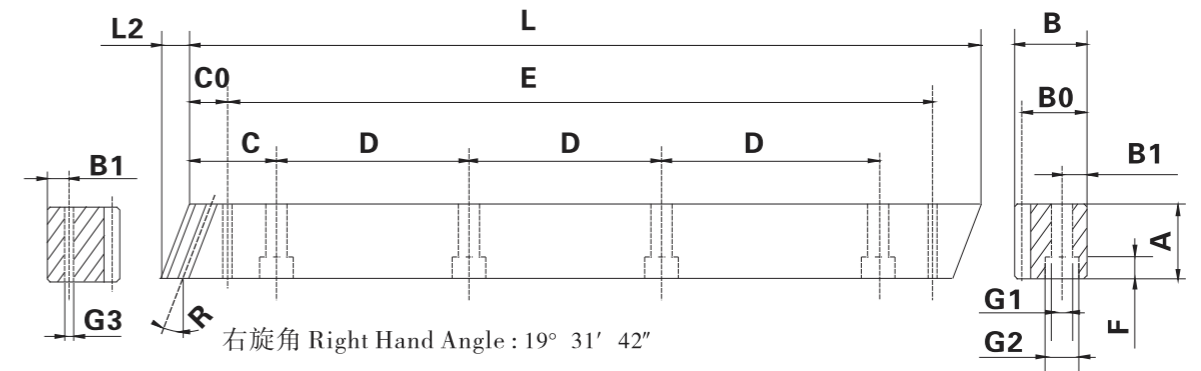
產品型號 Catalog No.	L	L2	齒數 Tooth No.	A	B	B0	C	D	孔數 Hole No.	B1	G1	G2	F	C0	E	G3
RHGH1.50506	500.00	6	100	17	17	15.5	62.50	125	4	8	6	9.5	7	31.7	436.6	5.7
RHGH1.51006	1000.0	6	200	17	17	15.5	62.50	125	8	8	6	9.5	7	31.7	936.6	5.7
RHGH020506	500.00	8.5	75	24	24	22	62.50	125	4	8	7	11	7	31.7	436.6	5.7
RHGH021006	1000.0	8.5	150	24	24	22	62.50	125	8	8	7	11	7	31.7	936.6	5.7
RHGH030506	500.00	10.3	50	29	29	26	62.50	125	4	9	10	15	9	35.0	430.0	7.7
RHGH031006	1000.0	10.3	100	29	29	26	62.50	125	8	9	10	15	9	35.0	930.0	7.7
RHGH040506	506.67	13.8	38	39	39	35	62.50	125	4	12	10	15	9	33.3	433.0	7.7
RHGH041006	1000.0	13.8	75	39	39	35	62.50	125	8	12	10	15	9	33.3	933.4	7.7
RHGH050506	500.00	17.4	30	49	39	34	62.50	125	4	12	14	20	13	37.5	425.0	11.7
RHGH051006	1000.0	17.4	60	49	39	34	62.50	125	8	12	14	20	13	37.5	925.0	11.7
RHGH060506	500.00	20.9	25	59	49	43	62.50	125	4	16	18	26	17	37.5	425.0	15.7
RHGH061006	1000.0	20.9	50	59	49	43	62.50	125	8	16	18	26	17	37.5	925.0	15.7
RHGH080506	480.00	28.0	18	79	79	71	60.00	120	4	25	22	33	21	120.0	240.0	17.7
RHGH081006	960.00	28.0	36	79	79	71	60.00	120	8	25	22	33	21	120.0	720.0	17.7

### 規格 Specifications

精度等級 Precision grade	DIN6h25	齒面硬度 Tooth hardness	50 ~ 55HRC
齒型 Gear teeth	斜齒 Helical	表面處理 Surface treatment	研磨 Grinding
壓力角 Pressure angle	20°	齒面處理 Treatment of Tooth	研磨 Grinding
材質 Material	SCM440	熱處理 Heat treatment	齒面高周波熱處理 Tooth surface induction hardened
右旋角 Right Hand Angle	19° 31' 42"		

# Precision Rack

## RHGH-DIN6



單位/Dimension : mm

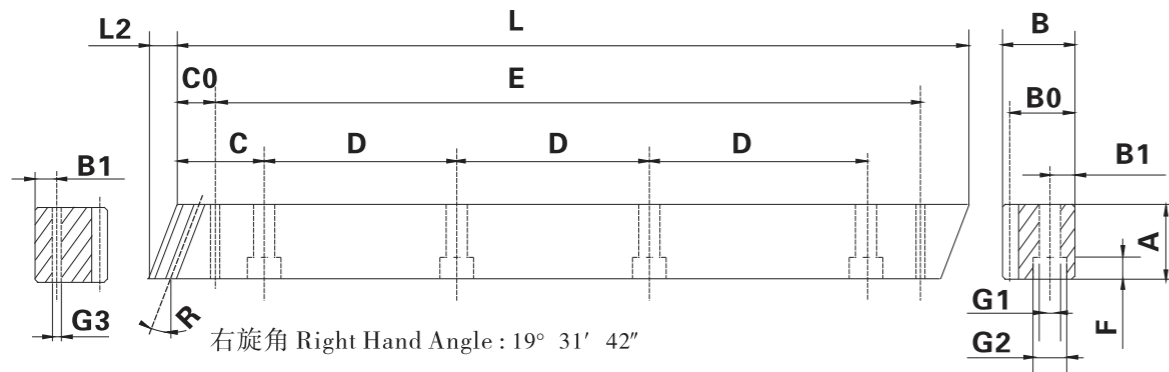
產品型號 Catalog No.	L	L2	齒數 Tooth No.	A	B	B0	C	D	孔數 Hole No.	B1	G1	G2	F	C0	E	G3
RHGH021506	1500	8.5	225	24	24	22	62.5	125	12	8	7	11	7	31.7	1436.6	5.7
RHGH022006	2000	8.5	300	24	24	22	62.5	125	16	8	7	11	7	31.7	1936.6	5.7
RHGH031506	1500	10.3	150	29	29	26	62.5	125	12	9	10	15	9	35	1430	7.7
RHGH032006	2000	10.3	200	29	29	26	62.5	125	16	9	10	15	9	35	1930	7.7
RHGH041506	1506.67	13.8	113	39	39	35	62.5	125	12	12	10	15	9	33.3	1433	11.7
SHGH042006	2000	13.8	150	39	39	35	62.5	125	16	12	10	15	9	33.3	1933.4	11.7
RHGH042006	1500	17.4	90	49	39	34	62.5	125	12	12	14	20	13	37.5	1425	11.7
RHGH052006	2000	17.4	120	49	39	34	62.5	125	16	12	14	20	13	37.5	1925	11.7
RHGH061506	1500	20.9	75	59	49	43	62.5	125	12	16	18	26	17	37.5	1425	15.7
RHGH062006	2000	20.9	100	59	49	43	62.5	125	16	16	18	26	17	37.5	1925	15.7
RHGH081506	1440	28.0	54	79	79	71	60.0	120	12	25	22	33	21	120	1240	19.7
RHGH082006	1970	28.0	72	79	79	71	60.0	120	16	25	22	33	21	120	1720	19.7

### 規格 Specifications

精度等級 Precision grade	DIN6h25	齒面硬度 Tooth hardness	50 ~ 55HRC
齒型 Gear teeth	斜齒 Helical	表面處理 Surface treatment	研磨 Grinding
壓力角 Pressure angle	20°	齒面處理 Treatment of Tooth	研磨 Grinding
材質 Material	SCM440	熱處理 Heat treatment	齒面高周波熱處理 Tooth surface induction hardened
右旋角 Right Hand Angle	19° 31' 42"		

# Precision Rack

## RHGH-DIN6M



單位/Dimension : mm

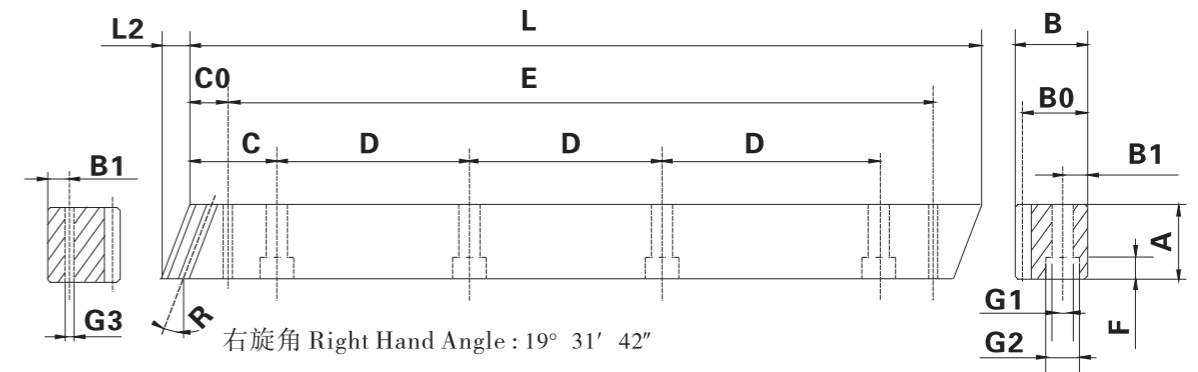
產品型號 Catalog No.	L	L2	齒數 Tooth No.	A	B	B0	C	D	孔數 Hole No.	B1	G1	G2	F	C0	E	G3
RHGH1.50506M	500.00	6	100	17	17	15.5	62.50	125	4	8	6	9.5	7	31.7	436.6	5.7
RHGH1.51006M	1000.0	6	200	17	17	15.5	62.50	125	8	8	6	9.5	7	31.7	936.6	5.7
RHGH020506M	500.00	8.5	75	24	24	22	62.50	125	4	8	7	11	7	31.7	436.6	5.7
RHGH021006M	1000.0	8.5	150	24	24	22	62.50	125	8	8	7	11	7	31.7	936.6	5.7
RHGH030506M	500.00	10.3	50	29	29	26	62.50	125	4	9	10	15	9	35.0	430.0	7.7
RHGH031006M	1000.0	10.3	100	29	29	26	62.50	125	8	9	10	15	9	35.0	930.0	7.7
RHGH040506M	506.67	13.8	38	39	39	35	62.50	125	4	12	10	15	9	33.3	433.0	7.7
RHGH041006M	1000.0	13.8	75	39	39	35	62.50	125	8	12	10	15	9	33.3	933.4	7.7
RHGH050506M	500.00	17.4	30	49	39	34	62.50	125	4	12	14	20	13	37.5	425.0	11.7
RHGH051006M	1000.0	17.4	60	49	39	34	62.50	125	8	12	14	20	13	37.5	925.0	11.7
RHGH060506M	500.00	20.9	25	59	49	43	62.50	125	4	16	18	26	17	37.5	425.0	15.7
RHGH061006M	1000.0	20.9	50	59	49	43	62.50	125	8	16	18	26	17	37.5	925.0	15.7
RHGH080506M	480.00	28.0	18	79	79	71	60.00	120	4	25	22	33	21	120.0	240.0	17.7
RHGH081006M	960.00	28.0	36	79	79	71	60.00	120	8	25	22	33	21	120.0	720.0	17.7

### 規格 Specifications

精度等級 Precision grade	DIN6Mh25	齒面硬度 Tooth hardness	50 ~ 55HRC
齒型 Gear teeth	斜齒 Helical	表面處理 Surface treatment	研磨 Grinding
壓力角 Pressure angle	20°	齒面處理 Treatment of Tooth	研磨 Grinding
材質 Material	SCM440	熱處理 Heat treatment	齒面高周波熱處理 Tooth surface induction hardened
右旋角 Right Hand Angle	19° 31' 42"		

# Precision Rack

## RHFQ-DIN7



單位/Dimension : mm

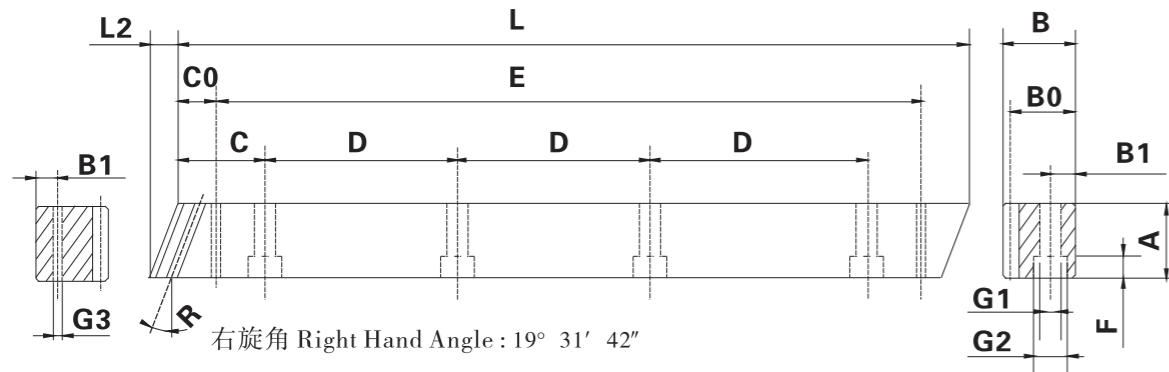
產品型號 Catalog No.	L	L2	齒數 Tooth No.	A	B	B0	C	D	孔數 Hole No.	B1	G1	G2	F	C0	E	G3
RHFQ1.50507G	500.00	6	100	17	17	15.5	62.50	125	4	8	6	9.5	7	31.7	436.6	5.7
RHFQ1.51007G	1000.0	6	200	17	17	15.5	62.50	125	8	8	6	9.5	7	31.7	936.6	5.7
RHFQ020507G	500.00	8.9	75	25	24	22	62.50	125	4	8	7	11	7	31.7	436.6	5.7
RHFQ021007G	1000.0	8.9	150	25	24	22	62.50	125	8	8	7	11	7	31.7	936.6	5.7
RHFQ030507G	500.00	10.6	50	30	29	26	62.50	125	4	9	10	15	9	35.0	430.0	7.7
RHFQ031007G	1000.0	10.6	100	30	29	26	62.50	125	8	9	10	15	9	35.0	930.0	7.7
RHFQ040507G	506.67	14.2	38	40	39	35	62.50	125	4	12	10	15	9	33.3	433.0	7.7
RHFQ041007G	1000.0	14.2	75	40	39	35	62.50	125	8	12	10	15	9	33.3	933.4	7.7
RHFQ050507G	500.00	17.7	30	50	39	34	62.50	125	4	12	14	20	13	37.5	425.0	11.7
RHFQ051007G	1000.0	17.7	60	50	39	34	62.50	125	8	12	14	20	13	37.5	925.0	11.7
RHFQ060507G	500.00	20.9	25	59	49	43	62.50	125	4	16	18	26	17	37.5	425.0	15.7
RHFQ061007G	1000.0	20.9	50	59	49	43	62.50	125	8	16	18	26	17	37.5	925.0	15.7
RHFQ080507G	480.00	28.0	18	79	79	71	60.00	120	4	25	22	33	21	120.0	240.0	17.7
RHFQ081007G	960.00	28.0	36	79	79	71	60.00	120	8	25	22	33	21	120.0	720.0	17.7

### 規格 Specifications

精度等級 Precision grade	DIN7e25	齒面硬度 Tooth hardness	15 ~ 20HRC
齒型 Gear teeth	斜齒 Helical	表面處理 Surface treatment	研磨 Grinding
壓力角 Pressure angle	20°	齒面處理 Treatment of Tooth	精切削 Finish cutting
材質 Material	SCM440	熱處理 Heat treatment	調質熱處理 Quenched
右旋角 Right Hand Angle	19° 31' 42"		

# Precision Rack

RHFQ-DIN8



單位/Dimension : mm

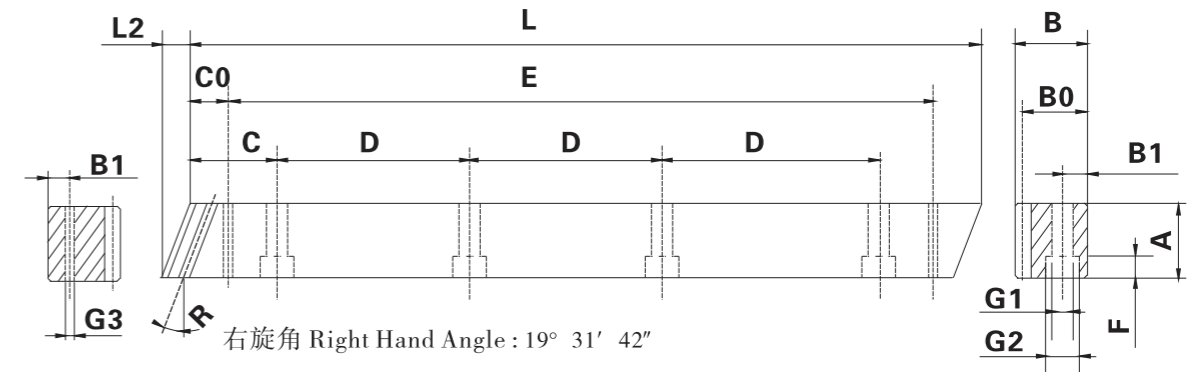
產品型號 Catalog No.	L	L2	齒數 Tooth No.	A	B	B0	C	D	孔數 Hole No.	B1	G1	G2	F	C0	E	G3
RHFQ1.50508	500.00	6	100	17	17	15.5	62.50	125	4	8	6	9.5	7	31.7	436.6	5.7
RHFQ1.51008	1000.0	6	200	17	17	15.5	62.50	125	8	8	6	9.5	7	31.7	936.6	5.7
RHFQ020508	500.00	8.9	75	25	24	22	62.50	125	4	8	7	11	7	31.7	436.6	5.7
RHFQ021008	1000.0	8.9	150	25	24	22	62.50	125	8	8	7	11	7	31.7	936.6	5.7
RHFQ030508	500.00	10.6	50	30	29	26	62.50	125	4	9	10	15	9	35.0	430.0	7.7
RHFQ031008	1000.0	10.6	100	30	29	26	62.50	125	8	9	10	15	9	35.0	930.0	7.7
RHFQ040508	506.67	14.2	38	40	39	35	62.50	125	4	12	10	15	9	33.3	433.0	7.7
RHFQ041008	1000.0	14.2	75	40	39	35	62.50	125	8	12	10	15	9	33.3	933.4	7.7
RHFQ050508	500.00	17.7	30	50	39	34	62.50	125	4	12	14	20	13	37.5	425.0	11.7
RHFQ051008	1000.0	17.7	60	50	39	34	62.50	125	8	12	14	20	13	37.5	925.0	11.7
RHFQ060508	500.00	20.9	25	59	49	43	62.50	125	4	16	18	26	17	37.5	425.0	15.7
RHFQ061008	1000.0	20.9	50	59	49	43	62.50	125	8	16	18	26	17	37.5	925.0	15.7
RHFQ080508	480.00	28.0	18	79	79	71	60.00	120	4	25	22	33	21	120.0	240.0	17.7
RHFQ081008	960.00	28.0	36	79	79	71	60.00	120	8	25	22	33	21	120.0	720.0	17.7

## 規格 Specifications

精度等級 Precision grade	DIN8e27	齒面硬度 Tooth hardness	15 ~ 20HRC
齒型 Gear teeth	斜齒 Helical	表面處理 Surface treatment	精切削 Finish cutting
壓力角 Pressure angle	20°	齒面處理 Treatment of Tooth	精切削 Finish cutting
材質 Material	SCM440	熱處理 Heat treatment	調質熱處理 Quenched
右旋角 Right Hand Angle	19° 31' 42"		

# Precision Rack

RHFH-DIN9



單位/Dimension : mm

產品型號 Catalog No.	L	L2	齒數 Tooth No.	A	B	B0	C	D	孔數 Hole No.	B1	G1	G2	F	C0	E	G3
RHFH1.50509G	500.00	6	100	17	17	15.5	62.50	125	4	8	6	9.5	7	31.7	436.6	5.7
RHFH1.51009G	1000.0	6	200	17	17	15.5	62.50	125	8	8	6	9.5	7	31.7	936.6	5.7
RHFH020509G	500.00	8.5	75	24	24	22	62.50	125	4	8	7	11	7	31.7	436.6	5.7
RHFH021009G	1000.0	8.5	150	24	24	22	62.50	125	8	8	7	11	7	31.7	936.6	5.7
RHFH030509G	500.00	10.3	50	29	29	26	62.50	125	4	9	10	15	9	35.0	430.0	7.7
RHFH031009G	1000.0	10.3	100	29	29	26	62.50	125	8	9	10	15	9	35.0	930.0	7.7
RHFH040509G	506.67	13.8	38	39	39	35	62.50	125	4	12	10	15	9	33.3	433.0	7.7
RHFH041009G	1000.0	13.8	75	39	39	35	62.50	125	8	12	10	15	9	33.3	933.4	7.7
RHFH050509G	500.00	17.4	30	49	39	34	62.50	125	4	12	14	20	13	37.5	425.0	11.7
RHFH051009G	1000.0	17.4	60	49	39	34	62.50	125	8	12	14	20	13	37.5	925.0	11.7
RHFH060509G	500.00	20.9	25	59	49	43	62.50	125	4	16	18	26	17	37.5	425.0	15.7
RHFH061009G	1000.0	20.9	50	59	49	43	62.50	125	8	16	18	26	17	37.5	925.0	15.7
RHFH080509G	480.00	28.0	18	79	79	71	60.00	120	4	25	22	33	21	120.0	240.0	17.7
RHFH081009G	960.00	28.0	36	79	79	71	60.00	120	8	25	22	33	21	120.0	720.0	17.7

## 規格 Specifications

精度等級 Precision grade	DIN9e27	齒面硬度 Tooth hardness	50 ~ 55HRC
齒型 Gear teeth	斜齒 Helical	表面處理 Surface treatment	研磨 Grinding
壓力角 Pressure angle	20°	齒面處理 Treatment of Tooth	精切削 Finish cutting
材質 Material	SCM440	熱處理 Heat treatment	齒面高周波熱處理 Tooth surface induction hardened
右旋角 Right Hand Angle	19° 31' 42"		

